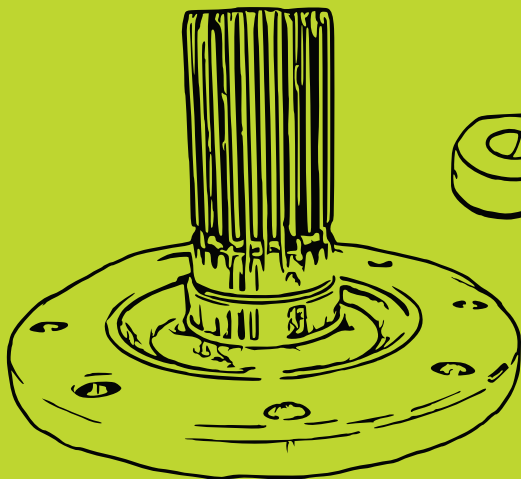
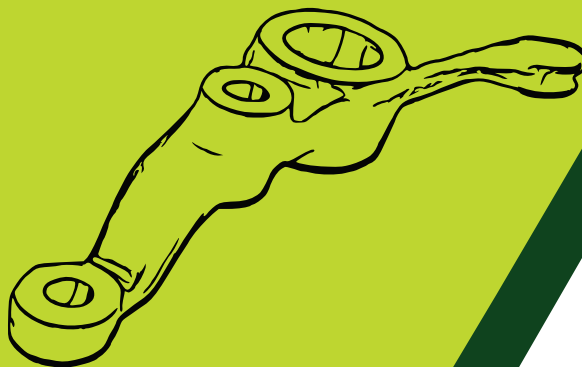
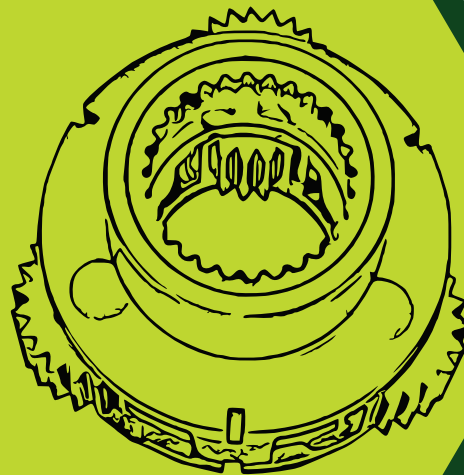
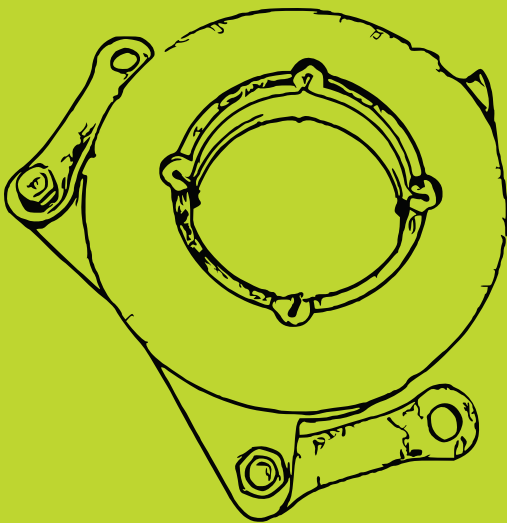
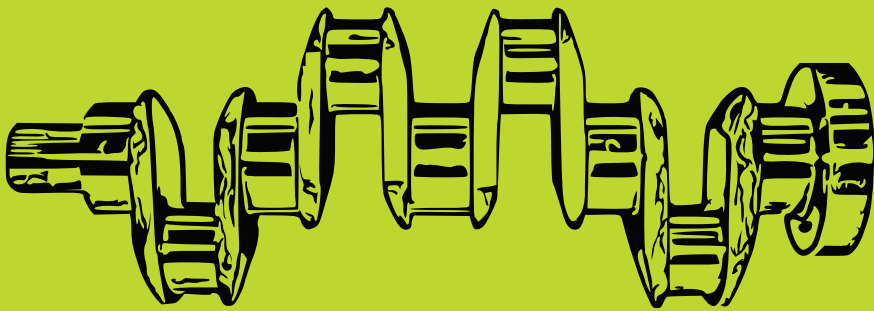
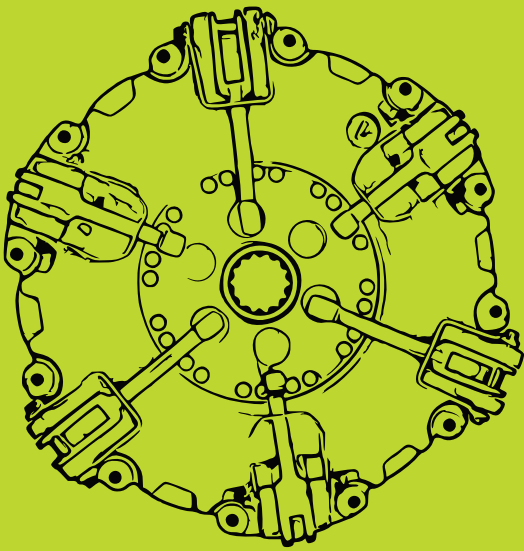


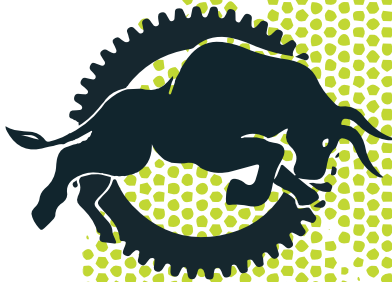


SCHWARZE BULLE
KEEPS YOU RUNNING!



2025 Product Catalogue

www.schwarzebulle.com



SCHWARZE BULLE
KEEPS YOU RUNNING!

INDEX

	Page
MASSEY FERGUSON	4-69
FIAT/NEW HOLLAND	70-110
JOHN DEERE	111-130
MTZ BELARUS	131
REPAIRING KITS	131-149



SCHWARZE BULLE
KEEPS YOU RUNNING!

TRACTOR PARTS



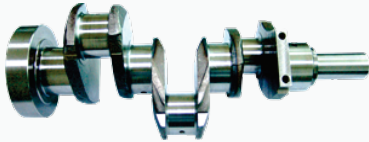
SCHWARZE BULLE
KEEPS YOU RUNNING!

MASSEY FERGUSON

SB Part No.
SB-1.1.1.1

Description
CRANK SHAFT

OEM No.
94458, U5BG0027, ZZ90019,
ZZ90078, ZZ90122, ZZ90150,
3637399M91, 3637410M91,
3637499M9, 3641858M91,
742827M91, 31312701,
94458, 94464, U5BG0027,
ZZ90019, ZZ90078, ZZ90122



ENGINE SYSTEM

Applicable Model

Perkins

A3.144, A3.152, AD3.152

Massey Ferguson

100 Series: 133, 135, 135 US BUILT, 148, 150, 152, 154, 154-420,

200 Series: 203, 205, 20B, 20C, 20D, 20E, 20F, 2135, 2200, 230, 230 US BUILT, 233, 234, 235,
240, 245, 250, 2500, 253, 254, 254-4, 255

Industrial

30 Series: 30, 30B, 30D, 30E, 30H, 40

300 Series: 340, 342, 350

300 Italian Series: 354

500 Series: 550

Landini

30 Series: 5830, 6030

40 Series: 5840

50 Series: 50

60 Series: 4560, 5560, 5860

500 Series: 5500

Crawler Tractors:

C Series: C4500, C4830, C5830, CF5830

Globus Series: 50

Trekker Series: 55, 55

Leyland

500 Series: 502



SCHWARZE BULLE
KEEPS YOU RUNNING!

MASSEY FERGUSON

SB Part No.
SB-1.1.1.2

Description
CRANK SHAFT

OEM No.

3637401R91, 02101825,
3637401M91, 94434, 94435,
U5BG0019, U5BG0024,
ZZ90081, ZZ90082,
3637401V91, 3637402M91,
4223939M91, 4227066M91,
736829M91



ENGINE SYSTEM

Applicable Model

Perkins

4.236/4.248 Series: A4.236, A4.248

Massey Ferguson

100 Series: 168, 174, 175, 178, 184, 185, 188, 194

200 Series: 240, 265, 273, 274, 283, 284, 285, 290, 293, 294

300 Series: 362, 365, 372, 373, 375, 382, 390, 396, 398

500 Series: 565, 575, 590

600 Series: 675, 690, 698

3000 Series: 3050, 3060, 3065, 3070, 3075

4200/4300 Series: 4225, 4235

5000 Brziliana Series: 5340, 5355, 5360

Industrial Tractors: 50, 50B, 50D, 50E, 50EX, 50H, 50HX

Telescopic Handlers: 8937

Challenger

Sitemaster: MT434JCB140, 1400, 1400B1550, 1550B214, 3C, 3CX, 3D, 4C, 4CN

Loader: 409, 410, 412, 415

Loader: 502-22, 506-36, 520, 520M, 525, 525-58, 525-67

Loader: 530, 530-110, 530-120, 530-95

Telescopic Handler: 540, 540B, 540BTM200

Landini

30/60 Series: i6530, 6560, 7530, 7560, 8530, 8560

Advantage Series: 65, 75, 85, 95

Blizzard Series: 65, 75, 85, 95

Crawler - Cingolati Series: C7830, CF6830

Vineyard/Orchard - Rex Series: 65, 75, 85, 95

Trekker Series: 65, 70, 75, 85

Matbro

266TS



SCHWARZE BULLE
KEEPS YOU RUNNING!

MASSEY FERGUSON

SB Part No.	Description	OEM No.
SB-1.1.1.3	CAM SHAFT	957E6250, 02100207, 131415264, 27948, 31415261, 3111415261, 31415261, 4226978M1, 733507M1, 733507V1



ENGINE SYSTEM

Applicable Model

Perkins

A3.144, A3.152, AD3.152

Massey Ferguson

Industrial Tractors: 20, 203, 205, 20B, 20C, 20D, 20E, 20F, 2135, 2200, 2500, 30B, 30D, 30E, 30H, 40, 50,

100 Series: 133, 134, 134C, 135, 145, 148, 150, 152, 154, 154-4, 154C,

200 Series: 230, 231, 233, 234, 235, 240, 245, 250, 253, 254, 255,

300 Series: 333, 334, 340, 342, 350,

Brazilian: 415

500 Series: 550

Allis Chalmers

160, 6040

Ford New Holl

Fordson: Dexta, Super Dexta

Landini

Prima Series: 4000, 5000,

500 Series: 4500, 5500,

30 Series: 4530, 5530, 5830,

40 Series: 5840,

60 Series: 5860, 6060,

70 Series: 5870

Blizzard Series: 50, 60,

Crawler - C/Cingolati Series: C4500, C4830, C5000, C5500, C5830, CF4830, CF5030, Cf5830,

Globus Series: Globus 50,

Vineyard - Rex Series: 55, 65,

Crawler - Trekker Series: 55

Volvo

Farm Tractors: T320, T400, T430



SCHWARZE BULLE
KEEPS YOU RUNNING!

MASSEY FERGUSON

SB Part No.	Description	OEM No.
SB-1.1.1.4	CAM SHAFT	31415264, 3637539M1



ENGINE SYSTEM

Applicable Model

Perkins

AT3.152, T3.152.4

Massey Ferguson

253, 360, 40E, 260, 364S SN, T3.152.4 TURBO 263



SCHWARZE BULLE
KEEPS YOU RUNNING!

MASSEY FERGUSON

SB Part No.	Description	OEM No.
SB-1.1.1.5	CAM SHAFT	02101904, 131415374, 131415375, 31415371, 31415374, 3218M001, 3321A003, 3637537M1, 1476280X1, 3641841M91



Applicable Model

Perkins

A4.236, A4.248,

Massey Ferguson

100 Series: 165, 168, 174, 175, 178,

100 Italian Series: 184, 194,

200 Series: 235, 240, 263, 265, 273, 274, 275, 283, 284, 290, 293, 294, 298,

Brazilian: 250, 292, 295, 296, 297, 299, 375E, 390E, 393, 394, 415, 425, 435, 440, 445, 460,
465, 475, 481, 492

3000 Series: 3050, 3060,

300 Series: 362, 365, 372, 375, 382, 390,

300 Italian Series: 373, 374, 377, 383, 384, 387, 393, 396, 397

Industrial Tractors: 50B, 50E, 50EX, 50H, 50HX

5000 Brazilian Series: 5340

500 Series: 565, 575

600 Series: 675, 690

Landini

50 Series: 6550, 8550

60 Series: 6560, 6860, 7560, 7860, 8560, 8860

70 Series: 6870, 8870

80 Series: 6880, 7880, 8880

500 Series: 6500, 7500

Blizzard Series: 65, 75, 85,

C Series: C6830, C7830, Cf6830,

Vineyard/Orchard - Rex Series: 65, 75, 85

Crawler - Trekker Series: 65, 75, 85



SCHWARZE BULLE
KEEPS YOU RUNNING!

MASSEY FERGUSON

SB Part No.	Description	OEM No.
SB-1.1.1.6	HUB IDLER	735852M1



ENGINE SYSTEM

Applicable Model

Perkins

AD4.203, AD4.212, AD4.236, AD4.248, A4.41, 1004.4

Massey Ferguson

375, 375S, 375E, 385



SCHWARZE BULLE
KEEPS YOU RUNNING!

SB Part No.
SB-1.1.1.7

Description
CONNECTING ROD

OEM No.
505016, 02101440
3637034M91, 84920,
M7BJ0015, ZZ90009,
3637034V91



Applicable Model

Perkins

1006.6, A4.212, A4.236, A4.248, A6.354, A6.372, C6.354.2

Massey Ferguson

100 Series: 165, 168, 174, 175, 178,

100 Italian Series: 184, 194

200 Series: 2620, 2640, 265, 2675, 273, 274, 283, 285, 290, 292

300 Series: 3610, 362, 365, 372, 375, 383, 384, 387, 390

500 Series: 50, 50B, 50C, 50D, 50E, 50EX, 510, 520, 525, 530, 565, 575, 590

600 Series: 675, 690

3000 Series: 3050, 3060, 3075, 3080, 3085, 3090, 3095, 3115

1000 N.A. Series: 1014, 1100, 1105, 1114,

6100/6200 Series: 6000, 6160, 6170, 6260

Articulated Series: 1200, 1250,

Landini

General Series: 6500, 6530, 6550, 6560, 6830, 6840, 6860, 6870, 6880, 7000, 7500,
7530, 7550, 7560, 7830, 7860, 7870, 7880, 8000, 8500, 8530, 8550, 8560, 8830,
8860, 8870, 8880, 9500

Advantage Series: 65, 75, 85

Atlas Series: 75, 85

Blizzard Series: 65, 75, 85

Cingolati Series: C10500, C6500, C6830, C7800, C8860

Legend Series: 105, 115

Rex Series: 65, 75, 85

Trekker Series: 65, 70, 75, 85

Allis Chalmers

170, 175

White Oliver

2-85



SCHWARZE BULLE
KEEPS YOU RUNNING!

MASSEY FERGUSON

SB Part No.
SB-1.1.1.8

Description
WATER PUMP

OEM No.
747542M91, 41312992,
U5MW0023, 41312487,
731280M1, 829258M1



ENGINE SYSTEM

Applicable Model

Perkins

A3.152, AD3.152

Massey Ferguson

3.152 Series: A3.152, AD3.152

100 Series: 135, 165, 175, 178

200 Series: 261, 270, 282, 282 US BUILT, 283, 290 US BUILT

600 Series: 670, 690

Industrial Tractors: 203, 205, 50, 50E, 50F, 50H



SCHWARZE BULLE
KEEPS YOU RUNNING!

MASSEY FERGUSON



SB Part No.	Description	OEM No.
SB-1.1.1.9	WATER PUMP	3118125R91, 3641219R91, 3641832R91, 3641832R92,, 10920058, 12431154, 131146009, 131147581, 131153501, 133478201, 136866721, 137711711, 141312551, 353756X1, 3637411M91, 3637411R91,

Applicable Model

Perkins

A4.212, A4.236, AT4.236, T4.236, A4.248

Massey Ferguson

Pre 100 Series (1947 - 65): 30, 30E, 31, 60, 60H

100 Series: 165, 165 US BUILT, 168, 174, 174S, 175, 178, 180, 184, 184-4, 184S, 185, 188, 194, 194S

100 Italian Series: 174, 184, 194

200 Series: 240, 250 BRAZILIAN, 255, 261, 265, 265S, 270, 273, 274, 274-4, 274C, 274SK, 275, 282, 282 US BUILT, 283, 284, 285, 285S, 290, 290 BRAZILIAN, 290 US BUILT, 293, 294, 294-4, 294C

300 Series: 362, 372, 375, 382, 390, 390E BRAZILIAN

300 Italian Series: 373, 374, 377, 383, 384, 387, 393, 394, 394C, 397

500 Series: 565, 575, 590

600 Series: 675, 690

Industrial Tractors: 20, 30, 30E, 31, 50, 50B, 50C, 50D, 50E, 50EX, 50F, 50H, 50HX, 60, 60H, 6500

Brazilian Models: 250, 290, 375E, 390E, 415, 425, 435, 440, 440XTRA, 445

Forklifts: 6500

Allis Chalmers

170170 DIESEL 175175 DIESEL

Case IH

International: 475



SCHWARZE BULLE
KEEPS YOU RUNNING!

MASSEY FERGUSON



SB Part No.	Description	OEM No.
SB-1.1.1.10	OIL PUMP	130300070706, 296240A1, 736513R91, 81804347, 957E6600, 957E6600B, 957E6600C, 02130145, 141314078, 141314187, 41314046, 41314079, 41314178, 41314187, 736513M91, 130300000000, 2130145, 3637359M91, 3637359V91, 3638632M91, AJR4120, 525422, 525430

Applicable Model

Perkins

A3.144, A3.152, AD3.152, AT3.152, T3.152

Massey Ferguson

Pre 100 Series (1947 - 65): 35, 35 US BUILT, 35X

100 Series: 133, 135, 135 US BUILT, 148, 150, 152

100 Italian Series: 154

200 Series: 230, 230 US BUILT, 233, 234, 235, 240, 245, 250, 253, 254, 254-4, 255

300 Series: 340, 342, 350, 355, 360

300 Italian Series: 353, 354, 363

500 Series: 550

Industrial Tractors: 20, 20B, 20C, 20D, 20E, 20F, 30, 30B, 30D, 30E, 30H, 40, 40E, 50, 154-420, 203, 205, 2135, 2200, 2500

Allis Chalmers

160, 6040

Case IH

CX Series: CX50, Cx60

International: 475

Ford New Holland

Fordson: Dexta, Super Dexta

Landini

Prima Series: 4000, 5000

30 Series: 4530, 5530, 5830, 6030

40 Series: 4560, 5840, 6040

500 Series: 4500, 5500

60 Series: 4560, 5560, 5860, 6060

70 Series: 5870, 6070

Advantage Series: Advantage 55, Advantage 60

Blizzard Series: Blizzard 50, Blizzard 60

Cingolati Series: C4500

C Series: C4830



SCHWARZE BULLE
KEEPS YOU RUNNING!

MASSEY FERGUSON

ENGINE SYSTEM



SB Part No.
SB-1.1.1.11

Description
PULLEY CRANK

OEM No.
31143733, 734627M1,
31143733

Application

Perkins

A3.144, A3.152, AD3.152, A3.152, A3.144, AD3.152

Massey Ferguson

100 Series : 35, 35x, 133, 135

200 Series : 230



SB Part No.
SB-1.1.1.12

Description
TAPPET

OEM No.
133261752, 33261751,
33261752, 3343F002,
3343F031, 3343J001,
3343J002, 3343J021,
4223074M1, 748420M1,
1750002m1, 1750002V1,
4223074V1, 736296M1,
743506M1, 747724M1

Application

Perkins

LF-4.248, TC-6.354

Massey Ferguson

100 Series: 165, 168, 174, 175, 178, 184
200 Series: 240, 265, 273, 274, 275, 283, 284

300 Series: 362, 365, 372, 373, 374, 375, 377, 383, 387, 390, 393, 397, 398, 399

500 Series: 560, 565, 575



SCHWARZE BULLE
KEEPS YOU RUNNING!

MASSEY FERGUSON

SB Part No.	Description	OEM No.
SB-1.1.1.13	ROCKER ARM (LH + RH),	41151481, 4115R306
SB-1.1.1.13.1		



ENGINE SYSTEM

Applicable Model

Perkins

AD4.203, AD4.212, AD4.236, AD4.248, A4.41, 1004.4

Massey Ferguson

375, 375S, 375E, 385



SCHWARZE BULLE
KEEPS YOU RUNNING!

MASSEY FERGUSON

SB Part No.	Description	OEM No.
SB-1.1.1.14	ROCKER ARM (LH + RH),	3737A101, 3737A091
SB-1.1.1.14.1		



ENGINE SYSTEM

Applicable Model

Perkins

A4.212, A4.236, A4.248, AT4.236, T4.236

Massey Ferguson

100 Series: 165, 168, 175, 178, 180, 185, 188

Italian 100 Series: 174, 174S, 184, 184S, 194, 194S

200 Series: 240, 255, 261, 265, 274, 282, 285, 290, 293

300 Series: 362, 372, 375, 382, 390, 397

Industrial: 20, 30, 50, 50B, 50C, 50E

Brazilian Models: 250, 290, 415, 425, 440, 445

Allis Chalmers

170, 175 (Diesel & Gas)

Case IH

475



SCHWARZE BULLE
KEEPS YOU RUNNING!

MASSEY FERGUSON

SB Part No.
SB-1.1.1.15

Description
BALANCER
UNIT

OEM No.
4111K051,4111K038, 4224110M91,
4111K053,4111K051, 4224141M91,
4111K055,4111K053, 4225230M91,
4111K059,4111K055, 4225230V91,
4111K064,4111K059, 4226792M91,
4111K066,4111K064, 4224107M91,
4111K091,4111K066, 4224108M91



ENGINE SYSTEM

Application

Massey Ferguson

100 Series: 175, 174 (Italian), 184 (Italian), 194 (Italian)

200 Series: 255, 265, 274, 275, 284, 290, 294

300 Series: 365, 375, 390, 398

300 Italian Series: 373, 377, 383, 387, 393

500 Series: 565, 575, 590

300 Series: 675, 690

3000 Series: 3050, 3060, 3065, 3070



SCHWARZE BULLE
KEEPS YOU RUNNING!

MASSEY FERGUSON



SB Part No.
SB-1.1.1.16

Description
OIL BATH AIR CLEANER

OEM No.
001210U91, 1886673M92,
1886673M93, 883914M92,
883914M94, 001210V91,
1884278M91, 1886673M94,
3824173M91, 3824173V91,
883914M1, 883914M94,
883914V94

Application

Perkins

AD3.152 (CE), T3.152, 4 (CN)

Massey Ferguson

Pre-100 Series: 35, 35 Gas/Petrol, 35X, Fe35

100 Series: 135, 148

200 Series: 230, 231, 240, 250, 253, 263



SB Part No.
SB-1.1.1.17

Description
AIR PRE CLEANER

OEM No.
81823388, 86620243,
CONN9A660A, C9NN9A660A,
1682798M1, 1687562M1,
3761802M1, 3821794M91

Application

Massey Ferguson

200 Series: 230, 240, 240S, 253, 263, 271, 275, 281, 290

300 Series: 342, 352, 362, 390E

Brazilian Models: 425, 435, 440, 445



SCHWARZE BULLE
KEEPS YOU RUNNING!

MASSEY FERGUSON

SB Part No.	Description	OEM No.
SB-1.1.1.18	OIL BATH AIR CLEANER	456001YD, 1696011M91



ENGINE SYSTEM

Application

Perkins

Models: A4.212 (LA), A4.236 (LD), A4.248 (LF), AD3.152 (CE), TAFE, 8504

Massey Ferguson

100 Series: 155, 158, 165, 178

200 Series: 240, 253

Landini

960347M1



SCHWARZE BULLE
KEEPS YOU RUNNING!

MASSEY FERGUSON

SB Part No.	Description	OEM No.
SB-1.1.1.19	AIR PRE CLEANER	1693129M1, AL39934, H001249



ENGINE SYSTEM

Application

Perkins

Models: A4.212 (LA), A4.236 (LD), A4.248 (LF), AD3.152 (CE), TAFE, 8504

Massey Ferguson

100 Series: 155, 158, 165, 178

200 Series: 240, 253

Allis Chalmers

Various Models

David Brown

90 Series: 1190, 1290, 1390, 1490, 1690

94 Series: 1194, 1294, 1394, 1494

Ford New Holland

100 Series: 2600, 3600, 4600, 5600, 5700, 6600, 6700

10 Series: 2610, 2910, 3610, 3910, 4110, 4610, 5110, 5610

1000 Series: 4000, 4100, 5000

John Deere

20 Series: 1020, 1120, 2020, 2120

30 Series: 130, 1130, 1630, 1830, 2030, 2130

40 Series: 1040, 1640, 1840, 2040, 10140, 840, 940

50 Series: 1350, 1550, 1750, 1850, 1950, 2250, 2450, 3350



SCHWARZE BULLE
KEEPS YOU RUNNING!

MASSEY FERGUSON



SB Part No.
SB-1.1.1.20

Description
STARTER MOTOR

OEM No.
1680065M3, 3539389M91,
1680065M2, 26264, LRS190,
3597426M2, 3597426M3,
3930505E1, 2873A104

Application

Massey Ferguson

200 Series: 230, 240, 240S, 253, 263, 271, 275, 281, 290

300 Series: 342, 352, 362, 390E

Brazilian Models: 425, 435, 440



SCHWARZE BULLE
KEEPS YOU RUNNING!

MASSEY FERGUSON



SB Part No.
SB-1.1.1.21

Description
STARTER MOTOR

OEM No.
8597972M2, 1668285M3,
0000900060070,000136704
0, 9000148416, 234987A1,
6005700081,C9946, 150509,
714/29500, 12873004,
1691206M1,1880093M2,
1858285M2,17072, 17650,
18289,18482, 19796, 26271,
26271R, 26404, 26404R,

Application

Massey Ferguson

100 Series: 175, 174 (Italian), 184 (Italian), 194 (Italian)

200 Series: 255, 265, 274, 275, 284, 290, 294

300 Series: 365, 375, 390, 398

300 Italian Series: 373, 377, 383, 387, 393

500 Series: 565, 575, 590

600 Series: 675, 690

3000 Series: 3050, 3060, 3065, 3070

Landini Series: 1007

Industrial Tractors

30D, 50, 50C, 50D, 50E, 50EX, 50H, 50HX, 60H



SCHWARZE BULLE
KEEPS YOU RUNNING!

MASSEY FERGUSON

ENGINE SYSTEM

SB Part No.	Description	OEM No.
SB-1.1.1.22	ALTERNATOR	1676690M92



Application

Massey Ferguson

200 Series: 240

3000 Series: 3050, 3060, 3065, 3070, 3090

3500 Series: 3505, 3525, 3545

3600 Series: 3630, 3650

SB Part No.	Description	OEM No.
SB-1.1.1.23	ALTERNATOR	1897695M91, 3638512R91, 1447634M91, 1897695M91, 1897695M91, 3477851M91, 3125132R92, 3129851R91, 3698016M91, 12144, 23851, 6005003145, 12041, 12046, 0120489048, 0120489345, 0120489074, 0120489084, 0120489086, 0120489087, 0120489088, 0120489090,



Application

Massey Ferguson

154-4, 240, 243, 253, 254-4, 263, 360, 362, 364S, and 365



SCHWARZE BULLE
KEEPS YOU RUNNING!

MASSEY FERGUSON



SB Part No.	Description	OEM No.
SB-1.1.1.24	COVER TECHO METER	37416751, 731208M1

Application

MASSEY FREGUSON

Pre100 Series: 35, 65

100 Series: 135, 150, 148, 158, 165, 168, 175, 178, 185, 188

200 Series: 230, 240, 245, 250, 265, 275, 285, 290, 298

300 Series: 340, 350, 360, 365, 375, 382, 382N, 390T, 398

500 Series: 565, 575, 590, 595

600 Series: 675, 690

700 Series: 765

SB Part No.	Description	OEM No.
SB-1.1.1.25	FUEL LIFT PUMP (With Polymer Membrane)	296265A1, 17401400, 12641808, 1447582M91, 2641712, 2641712, 2641808, 3637292M91, ULPK0004



Application

Massey Ferguson

164, 230, 231, 236, 240, 243, 246, 260, 253, 254, 360, 20, 30, 40, 200, 203, 205, 2135, 2200, 2500

CASE IH Tractor

C848, CS52, C858, C863, CX50, CX60, C50, C60,



SCHWARZE BULLE
KEEPS YOU RUNNING!

MASSEY FERGUSON



SB Part No.
SB-1.1.1.26

Description
FUEL LIFT PUMP
(With Polymer Membrane)

OEM No.
3118234R91, 4222108R91,
505508, 505642, 17400400,
17401000, 12641725,
1 2 6 4 1 7 2 8 ,
136851123, 2641709,
2641711, 1447017M91,
1447688M91, 2641711,
2 6 4 1 7 1 3 , 2 6 4 1 7 2 5 ,
2641728, 6005014391,
7701031881

Application

MasseyFerguson

31, 166, 168, 175, 180, 184, 185, 255, 261, 265, 270, 274, 276, 283, 290, 294, 362, 375, 383,
390, 393, 870, 890, 3050, 3000, 3085, 3070

Industrials: 50, 50C,

Alls Chalmers

170, 175,

Case IH

475,

Caterpillar

416, 426

Clark

CY60-70-80B

JCB

3C, 3CX, 3D, 3DS, 40, 4CN, 140, 412, 415, 520, 520HL, 520M, 525B, 5258 HL, 530B, 540B,
540BM, 826,

John Deere

908, 910,



SCHWARZE BULLE
KEEPS YOU RUNNING!

MASSEY FERGUSON

**SB Part No.**

SB-1.1.1.27

Description

ASSY. FILTER PRIMARY
WITH FILTER ELEMENT

OEM No.

2656615, 5836B325,
12656615, 883786M91,
5836B100, 5836B230,
1446017M91, 2656615,
5836B100, 5836B230,
883786M91,

Application**Perkins**

ED - 4.108, 4.236 Series, LD - 4.236, LJ - T4.236, AM - 1004-40T,

Massey Ferguson

PRE 100: Series, 35,

100 Series: 133, 135, 140, 145, 152, 154, 155, 158, 165, 168, 174, 175, 178, 184, 185, 188,
194,

200 Series: 230, 231, 233, 240, 250, 290, 263T,

Case IH

74 Series: 374,

BD Series: 434,

CLASSIQUE,

454,

Ford New Holland

2000, 2600,



SCHWARZE BULLE
KEEPS YOU RUNNING!

MASSEY FERGUSON

CLUTCH SYSTEM



SB Part No.	Description	OEM No.
SB-1.1.2.1	CLUTCH ASSEMBLY	230001542, 230001542, 1867438M91, 1867438M92 ,3599463M91, 3599463M92,

Application

Massey Ferguson

100 Series: 135, 148, 152, 155, 158

200 Series: 230, 231, 235, 240, 245, 250, 255, 261

300 Series: 340, 342, 350

500 Series: 550

Industrial Series: 20, 20B, 20D, 20F

Industrial Tractors (E Series): 30E, 40E



SB Part No.	Description	OEM No.
SB-1.1.2.2	CLUTCH ASSEMBLY	3697162M91, 3700527M1

Application

Massey Ferguson

200 Series: 271, 281

300 Series: 362, 362 N, 365, 372 N, 375, 382, 385, 390, 383, 390, 393, 396, 398, 399

4000 Series: 4220, 4225, 4235, 4240, 4243, 4245, 4253, 4255, 4260, 4263, 4265, 4270, 4320, 4325, 4335



SCHWARZE BULLE
KEEPS YOU RUNNING!

MASSEY FERGUSON

CLUTCH SYSTEM

SB Part No.
SB-1.1.2.3

Description
CLUTCH COVER PLATE

OEM No.
3700547M1



Applicable Model

Massey Ferguson

100 Series: 135, 148, 152, 155, 158

200 Series: 230, 231, 235, 240, 245, 250, 255, 261

Industrial Tractors: 20, 20B, 20D, 20F

SB Part No.
SB-1.1.2.3

Description
CLUTCH FLYWHEEL PLATE

OEM No.
887902M1



Applicable Model

Massey Ferguson

100 Series: 135, 148, 152, 155, 158

Industrial Tractors: 20, 20B, 20D, 20F, 30E, 40, 40E

200 Series: 230, 231, 235, 240, 245, 250, 255, 261, 271, 281

300 Series: 340, 342, 350, 362, 362N, 365, 372N, 375, 382, 385, 390, 383, 390, 393, 396, 398, 399

500 Series: 550

4000 Series: 4220, 4225, 4235, 4240, 4320, 4325, 4335, 4225, 4235, 4240, 4243, 4245, 4253, 4255, 4260, 4263, 4265, 4270

Industrial Tractors: 20, 20B, 20D, 20F, 30E, 40, 40E



SCHWARZE BULLE
KEEPS YOU RUNNING!

MASSEY FERGUSON

SB Part No.	Description	OEM No.
SB-1.1.2.5	CLUTCH PTO PLATE	887903M1



CLUTCH SYSTEM

Applicable Model

Massey Ferguson

100 Series:135, 148, 152, 155, 158

200 Series:230, 231, 235, 240, 245, 250, 255, 261, 271, 281

300 Series:340, 342, 350, 362, 362N, 365, 372N, 375, 382, 385, 390, 383, 390, 393, 396, 398

500 Series:5504200/4

4000 Series:4220, 4225, 4235, 4240, 4320, 4325, 4335, 4235, 4240, 4243, 4245, 4253, 4255, 4260, 4263, 4265, 4270

Industrial Tractors:20, 20B, 20D, 20F, 30E, 40, 40E



SCHWARZE BULLE
KEEPS YOU RUNNING!

MASSEY FERGUSON

SB Part No.	Description	OEM No.
SB-1.1.2.6	CLUTCH PRESSURE PLATE	887903M1



CLUTCH SYSTEM

Applicable Model

Massey Ferguson

100 Series:135, 148, 152, 155, 158

200 Series:230, 231, 235, 240, 245, 250, 255, 261

300 Series:340, 342, 350, 362, 362N, 365, 372N, 375, 382, 385, 390

500 Series:550

4000 Series:4220, 4225, 4235, 4240, 4320, 4325, 4335

Industrial Tractors:20, 20B, 20D, 20F, 30E, 40, 40E



SCHWARZE BULLE
KEEPS YOU RUNNING!

MASSEY FERGUSON

CLUTCH SYSTEM

SB Part No.
SB-1.1.2.7

Description
CLUTCH FRICTION DRIVEN
PLATE 12" (10 Splines),

OEM No.
3300013460, 3300013460,
1866042M93, 3599462M91,
887889M91, 887889M94,
907090M93



Applicable Model

Massey Ferguson

100 Series:135, 148, 152, 155, 158

200 Series:230, 231, 235, 240, 245, 250, 255, 261

300 Series:340, 342, 350, 362, 362N, 365, 372N, 375, 382, 385, 390

500 Series:550

4000 Series:4220, 4225, 4235, 4240, 4320, 4325, 4335

Industrial Tractors:20, 20B, 20D, 20F, 30E, 40, 40E

SB Part No.
SB-1.1.2.8

Description
CLUTCH FRICTION PTO
PLATE 10"

OEM No.
3250108460, 3250108460,
1865836M91, 1867386M91,
3478359M91, 3620417M91,
1486544M91



Applicable Model

Massey Ferguson

100 Series: 135, 148, 152, 155, 158, 165, 168, 185, 188

200 Series: 231, 235, 240, 245, 250, 255, 261, 265, 270, 275282, 282 US Built, 283, 285, 290, 290 Brazilian, 290 US Built

300 Series: 340, 342, 350, 355, 360, 362, 365, 375, 375E Brazilian 390, 390E Brazilian

500 Series: 550, 565, 575, 590

600 Series:675, 690

Industrial Tractors: 20, 20B, 20D, 20F, 30, 30E, 40, 40B, 40E, 50



SCHWARZE BULLE
KEEPS YOU RUNNING!

MASSEY FERGUSON

CLUTCH SYSTEM



SB Part No.
SB-1.1.2.9

Description
CLUTCH FRICTION
DRIVEN PLATE

OEM No.
331015710, 331015710,
3697208M91, 3701008M91

Applicable Model

Massey Ferguson

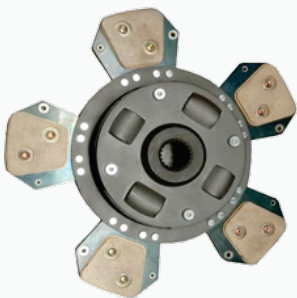
300 Series: 362, 365, 372, 375, 382, 390

4000 Series: 4220, 4225, 4235, 4325, 4335

SB Part No.
SB-1.1.2.10

Description
CLUTCH FRICTION
DRIVEN PLATE with
Dampers

OEM No.
3697163M91, 3701009M91



Applicable Model

Massey Ferguson

300 Series: 362, 365, 372, 375, 382, 390

4000 Series: 4220, 4225, 4235, 4325, 4335



SCHWARZE BULLE
KEEPS YOU RUNNING!

MASSEY FERGUSON

SB Part No.
SB-1.1.2.11

Description
Bearing Support
Housing

OEM No.
886727M1, 886727M2,
886727M3, 886727M4,
886727T4,



Applicable Model

Massey Ferguson

100 Series: 165, 135

200 Series: 265, 298

300 Series: 383, 398

500 Series: 595

4000 Series: 4245, 4255



SCHWARZE BULLE
KEEPS YOU RUNNING!

MASSEY FERGUSON



SB Part No.
SB-1.1.3.1

Description
STEERING ASSY

OEM No.
1673663M91, 1673663T91

Applicable Model

Massey Ferguson

100 Series: 135, 135 GAS / 135 PETROL148,
200 Series: 240, 240S

SB Part No.
SB-1.1.3.2
SB-1.1.3.3

Description
STEERING
ARM (RH / LH),

OEM No.
1850022 M1, 1850021 M1,
1850022V1, 1220009089,
220009089, 3900210M1



Applicable Model

Massey Ferguson

Pre-100 Series: 35, 35 GAS / 35 PETROL, 35X
100 Series: 133,135,135 GAS / 135 PETROL140,145,148,152,155,158
200 Series: 230, 235, 240, 240S, 245, 250, 255, 260



SCHWARZE BULLE
KEEPS YOU RUNNING!

MASSEY FERGUSON

SB Part No.
SB-1.1.3.4

Description
STEERING SHAFT

OEM No.
1867192M91,



Applicable Model

Massey Ferguson

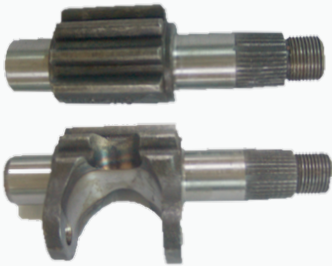
100 Series: 133, 135, 135 Petrol, 140, 145, 148, 152, 155, 158,

200 Series: 230, 235, 240, 240 S, 245, 250, 255, 260,

SB Part No.
SB-1.1.3.5
SB-1.1.3.6

Description
ROCKER SHAFT

OEM No.
1850017M1, 1850017V1,
1850017M1



Applicable Model

Massey Ferguson

100 Series: 135, 135 GAS / 135 PETROL, 148,

200 Series: 230, 240, 250,



SCHWARZE BULLE
KEEPS YOU RUNNING!

MASSEY FERGUSON

SB Part No.	Description	OEM No.
SB-1.1.3.7	DRAG LINK END	1860412M2, 1860412V2



Applicable Model

Massey Ferguson

100 Series: 135, 135 GAS / 135 PETROL, 148

200 Series: 230, 240, 250

SB Part No.	Description	OEM No.
SB-1.1.3.8	DRAG LINK END	826752M92, 826752M91, 968405M91, 969352M1, 180391M91, 826 752M92, 826752M91, 826757M91, 827039M1, 967702M2, 968405M91



Applicable Model

Massey Ferguson

100 Series: 133, 135, 135 GAS / 135 PETROL 148, 175,

200 Series: 230, 231, 240, 250,

Industrial Tractors: 3165, 175 US BUILT 20D, 20E

TE20 Series: TO20, TO30, TO35



SCHWARZE BULLE
KEEPS YOU RUNNING!

MASSEY FERGUSON

SB Part No.
SB-1.1.3.9

Description
TIE ROD ASSEMBLY

OEM No.
1860411M92



Applicable Model

Massey Ferguson

300 Series: 365, 375, 390, 390 T, 398, 399

4200 Series: 4225, 4235, 4240, 4245, 4255, 4260, 4265, 4270

4300 Series: 4325, 4335, 4345, 4355, 4360, 4365, 4370

5300 Series: 5335, 5355, 5360, 5365

5400 Series: 5425, 5435, 5445, 5455, 5460

6400 Series: 6445, 6460, 6470

SB Part No.
SB-1.1.3.10

Description
RAM
EXTENSION
SHAFT

OEM No.
3599609M1



Applicable Model

Massey Ferguson

300 Series: 365, 375, 390, 390 T, 398, 399

4200 Series: 4225, 4235, 4240, 4245, 4255, 4260, 4265, 4270

4300 Series: 4325, 4335, 4345, 4355, 4360, 4365, 4370

5300 Series: 5335, 5355, 5360, 5365

5400 Series: 5425, 5435, 5445, 5455, 5460

6400 Series: 6445, 6460, 6470



SCHWARZE BULLE
KEEPS YOU RUNNING!

MASSEY FERGUSON

SB Part No.	Description	OEM No.
SB-1.1.3.11	DRAG LINK END	3599679M91, 3599679M92



Applicable Model

Massey Ferguson

300 Series: 3393,365,375,

383 (300 Italian Series): 390,390T,396,398,399

4200/4300 Series: 4225, 4235, 4245, 4255, 4260, 4265, 4270, 4325, 4335, 4345, 4355, 4360, 4365, 4370

5000 Brazilian Series: 5355,5360,5365

5400 Series: 5425,5435,5445,5455,5460

6400 Series: 6445,6460,6470

Landini

60 Series: 7860,



SCHWARZE BULLE
KEEPS YOU RUNNING!

MASSEY FERGUSON



SB Part No.
SB-1.1.3.12

Description
BALL JOINT

OEM No.
1695045M91

Applicable Model

Massey Ferguson

300 Series: 365,375,390,390T,398,399

4200/4300 Series: 4225, 4235, 4245, 4255, 4260, 4265, 4270, 4325, 4335, 4345, 4355, 4360, 4365, 4370

5000 Brazilian Series: 5355,5360,5365

5400 Series: 5425,5435,5445,5455,5460

6400 Series: 6445,6460,6470



SCHWARZE BULLE
KEEPS YOU RUNNING!

MASSEY FERGUSON

STEERING & TIE ROAD SYSTEM

SB Part No.
SB-1.1.3.13

Description
STEERING ARM

OEM No.
1676664M1, 897923M1,
897923M2



Applicable Model

Massey Ferguson

100 Series: 165, 168, 175, 178, 185, 188

200 Series: 235, 265, 270, 275, 283, 285, 290, 290 US BUILT, 292 BRAZILIAN, 295 BRAZILIAN

500 Series: 565, 575, 590

600 Series: 670, 675, 690

Industrial Series: 30D, 3165, 50, 50B, 50D, 50E, 50EX, 50F, 50H, 50HX, 60H

Brazilian: 375E BRAZILIAN, 390E BRAZILIAN, 425 BRAZILIAN, 435 BRAZILIAN, 440 BRAZILIAN, 445 BRAZILIAN, 460 BRAZILIAN

SB Part No.
SB-1.1.3.14

Description
STEERING ARM

OEM No.
1671335M1, 898358M1,
1671335V1



Applicable Model

Massey Ferguson

100 Series: 165, 168, 175, 178

178 US BUILT: 185, 188

200 Series: 265, 275, 282

282 US BUILT: 285, 290

Brazilian: 375E BRAZILIAN, 390E BRAZILIAN

Industrial Tractors: 5050B



SCHWARZE BULLE
KEEPS YOU RUNNING!

MASSEY FERGUSON

SB Part No.	Description	OEM No.
SB-1.1.3.15	STEERING ARM	898355M91, 1471699M92



Applicable Model

Massey Ferguson

100 Series: 165, 168, 175, 178, 185, 188

200 Series: 235, 265, 270, 275, 283, 285, 290, 290 US BUILT, 292 BRAZILIAN, 295 BRAZILIAN

500 Series: 565, 575, 590

600 Series: 670, 675, 690

Industrial: 30D, 3165, 50, 50B, 50D, 50E, 50EX, 50F, 50H, 50HX, 60H

Brazilian: 375E BRAZILIAN, 390E BRAZILIAN, 425 BRAZILIAN, 435 BRAZILIAN, 440 BRAZILIAN, 445 BRAZILIAN, 460 BRAZILIAN

MASSEY FERGUSON

SB Part No.	Description	OEM No.
SB-1.1.3.16	KNUCKLE LEVELLING BOX	897653M2



Applicable Model

Massey Ferguson

Pre-100 Series (1947-65): 25, 35 (Gas/Petrol), 35X, 65, 765, 825, 835, 865

100 Series: 122, 130, 135 (Gas/Petrol), 145, 165, 168, 185, 188

200 Series: 230, 231, 235, 240, 245, 250, 255, 260, 261, 265, 265S, 275, 285, 285S, 290, 298

300 Series: 340, 342, 350, 352, 355, 360, 362, 365, 372, 375, 382, 390, 398, 399

3000 Series: 3050, 3060, 3065, 3070, 3080, 3090, 3095, 3115, 3125

500 Series: 550, 565, 575, 590600 Series: 675, 690, 698, 698T, 699

TE20 Series: TE20, TEA20, TED20, TEF20

Landini

LARGE 9550

SB Part No.	Description	OEM No.
SB-1.1.3.17	POWER STEERING PUMP	897147M95, 897147M94, 897146M94, 1662243M91, 523092M91, 897147M92



Applicable Model

Massey Ferguson

100 Series: 165, 165 US Built, 168, 175, 175 US Built, 178, 185, 188

200 Series: 255, 265, 275, 282, 282 US Built, 285 (FR), 290

500 Series: 565, 575, 590

600 Series: 690

Industrial: 30, 31, 50, 50B, 50C, 50D, 50E, 50EX, 50F, 50H, 50HX, 60H

Brazilian: 375E, 390E

Forklifts

6500

Industrial

6500 (Industrial Tractors)



SCHWARZE BULLE
KEEPS YOU RUNNING!

MASSEY FERGUSON

SB Part No.
SB-1.1.4.1

Description
PLANETARY
CARRIER
UNIT ASSY.

OEM No.
897016M92, 897711M92,
897711M93, 887711M3,
897711M91



Applicable Model

Massey Ferguson

Pre-100 Series: 35, 35 (Gas/Petrol), 35X, 65, 765

100 Series: 133, 135, 135 Gas/Petrol, 135 US Built, 140, 145, 148, 150, 152, 155, 158, 165, 165 US Built, 175, 175 US Built

200 Series: 230, 230 US Built, 231, 235, 240, 243, 245, 250, 253, 255, 260, 262, 263, 265, 265S, 275, 285S, 290

300 Series: 340, 342, 350, 352, 355, 360, 362, 365, 375,

Brazilian: 375E, 390E, 415, 425, 435

500 Series: 550, 560

Landini

30 Series: 58306030



SCHWARZE BULLE
KEEPS YOU RUNNING!

MASSEY FERGUSON



SB Part No.

SB-1.1.4.2

Description

PLANETARY
CARRIER
UNIT ASSY.

OEM No.

1866558M92, 1866558M93,
1870538M92, 1870538M93,
1866558M93, 1870538M1,
1870538M91, 1888677M91,
2521194, 2521194K92,
2521194M1

Applicable Model

Massey Ferguson

Articulated Series: 1200, 1250

100 Series: 148, 152, 165, 168, 185, 188

200 Series: 235, 245, 250, 260, 265, 275, 283, 283 Brazilian, 285, 290, 298

300 Series: 362, 365, 375, 375E Brazilian, 390, 390E Brazilian, 390T, 396, 398, 399

300 Italian Series: 383, 393

500 Series: 550, 565, 575, 590, 592, 595

600 Series: 675, 690, 698, 698T, 699

4000 Series: 4215, 4220, 4225, 4235, 4245, 4255, 4260, 4265, 4270, 4315, 4325, 4335, 4345, 4355, 4360, 4365, 4370

Brazilian: 440

Industrial: 30B, 30D, 30E, 40B, 50, 50A, 50B, 50C, 50D, 50E, 50F, 60

Landini

30 Series: 5830, 6030



SCHWARZE BULLE
KEEPS YOU RUNNING!

MASSEY FERGUSON

SB Part No.
SB-1.1.4.3

Description
PLANETARY
CARRIER
UNIT ASSY.

OEM No.
1864872M1, 1864872M3,
3612128M1, 361212M1



Applicable Model

Massey Ferguson

100 Series: 135, 135 US Built, 158, 165, 165 US Built, 168, 175, 175 US Built, 178, 180, 185, 188

200 Series: 235, 240, 245, 250, 253, 255, 261, 265, 270, 275, 282, 282 US Built, 283, 285, 290 US Built

300 Series: 350, 352, 355, 360, 362, 365, 372, 375, 375E (Brazilian), 382, 383 (Italian), 390, 390T, 393 (Italian), 396

500 Series: 565, 575, 590

600 Series: 670, 675, 690

Industrial Tractors: 20E, 20F, 30, 30B, 30D, 30E, 30H, 31, 40, 40B, 40D, 40E, 50, 50A, 50C, 50D, 50E, 50EX

Landini

30 Series: 5830



SCHWARZE BULLE
KEEPS YOU RUNNING!

MASSEY FERGUSON

SB Part No.	Description	OEM No.
SB-1.1.4.4	SUN GEAR	1693734M1



Applicable Model

Massey Ferguson

100 Series: 135, 135 US Built, 158, 165, 165 US Built, 168, 175, 175 US Built, 178, 180, 185, 188

200 Series: 235, 240, 245, 250, 253, 255, 261, 265, 270, 275, 282, 282 US Built, 283, 285, 290 US Built

300 Series: 350, 352, 355, 360, 362, 365, 372, 375, 375E (Brazilian), 382, 383 (Italian), 390, 390T, 393 (Italian), 396

500 Series: 565, 575, 590

600 Series: 670, 675, 690

Industrial Tractors: 20E, 20F, 30, 30B, 30D, 30E, 30H, 31, 40, 40B, 40D, 40E, 50, 50A, 50C, 50D, 50E, 50EX

Landini

30 Series: 5830

SB Part No.	Description	OEM No.
SB-1.1.4.5	AXLE SHAFT	1870612M1



Applicable Model

Massey Ferguson

100 Series: 135, 135 US Built, 150, 158, 165, 165 US Built, 168, 175, 175 US Built, 178, 180, 185, 188

200 Series: 235, 240, 245, 250, 253, 255, 260, 261, 265, 270, 275, 283, 285, 290, 290 Brazilian, 290 US Built

300 Series: 350, 352, 355, 360, 362, 365, 372, 375, 375E Brazilian, 382, 383 (Italian), 390, 390E Brazilian, 390T, 393 (Italian), 396

500 Series: 565, 575

Industrial Tractors: 20E, 20F, 30, 30B, 30D, 30E, 30H, 31, 40, 40B, 40E, 50, 50A, 50B, 50C, 50D, 50E



SCHWARZE BULLE
KEEPS YOU RUNNING!

MASSEY FERGUSON

SB Part No.
SB-1.1.4.6

Description
AXLE SHAFT

OEM No.
1678303M1



Applicable Model

Massey Ferguson
375, 3755, 375E, 385

SB Part No.
SB-1.1.4.7

Description
WHEEL SHAFT
HALF SHAFT
STUB AXLE

OEM No.
884850M3, 884847M92,
884847M93, 884850M3,
884847M93



Applicable Model

Massey Ferguson

100 Series: 135, 135 US Built, 150, 158, 165, 165 US Built, 168, 175, 175 US Built, 178, 180, 185, 188

200 Series: 235, 240, 245, 250, 253, 255, 260, 261, 265, 270, 275, 283, 285, 290, 290 Brazilian, 290 US Built

300 Series: 350, 352, 355, 360, 362, 365, 372, 375, 375E Brazilian, 382, 383 (Italian), 390, 390E Brazilian, 390T, 393 (Italian), 396

500 Series: 565, 575

600 Series: 670, 690

Industrial Tractors: 20E, 20F, 30, 30B, 30D, 30E, 30H, 31, 40, 40B, 40E, 50, 50A, 50B, 50C, 50D, 50E

Landini

30 Series: 5830



SCHWARZE BULLE
KEEPS YOU RUNNING!

MASSEY FERGUSON



SB Part No.
SB-1.1.4.8
SB-1.1.4.8.1

Description
REAR AXLE HOUSING
(LH + RH),

OEM No.
884855M92, 190962M2

Application

Massey Ferguson

100 Series: 1200, 125, 135, 150, 158, 165, 175, 188

200 Series: 200, 201, 230, 230 Brazilian, 231, 235, 240, 245, 250, 250 Brazilian, 253, 255, 261, 265, 270, 275, 282, 283, 285, 290, 292, 297, 298, 299

300 Series: 300, 360, 370, 375E, 390E, 399

400 Series (Brazilian): 406, 415, 425, 435, 440, 445, 460, 465, 475, 481, 492

500 Series: 550, 565, 575, 590

600 Series: 675, 690, 698, 699

Landini

30 Series: 5830

70 Series: 7830



SB Part No.
SB-1.1.4.9
SB-1.1.4.9.1

Description
REAR AXLE HOUSING
(RH + LH),

OEM No.
3759143M3, 3759144M3

Application

Massey Ferguson

50HX, 640B, 650B, 660B, 750, 750B, 760, 760B, 860, 860B, 860S, 860SE

Fermec

640B, 650B, 660B, 750, 750B, 760, 760B, 860, 860B, 860S, 860SE

Terex

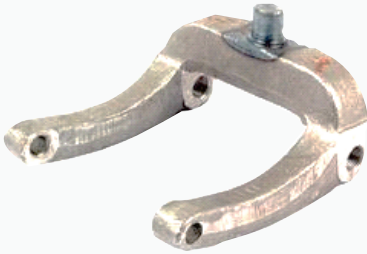
Tx640, Tx650, Tx660, Tx760, Tx860



SCHWARZE BULLE
KEEPS YOU RUNNING!

MASSEY FERGUSON

SB Part No.	Description	OEM No.
SB-1.1.4.10	FORK SELECTOR	190968M1



Application

Perkins

Pre-100 Series: TED-20, TE20, TE20D, TE20F, TO20, 35

100 Series: 135, 135 Gas/Petrol, 148, 150, 158, 165, 165 Gas/Petrol, 168, 176, 178, 185

200 Series: 188, 230, 240, 245, 250, 265, 275, 285, 290, 298

300 Series: 340, 360, 366, 375, 382, 382N, 385, 390T, 398, 399

600 Series: 566, 665, 675, 676



SCHWARZE BULLE
KEEPS YOU RUNNING!

MASSEY FERGUSON



SB Part No.
SB-1.1.4.11

Description
BRACKET DIFF FORK

OEM No.
191056M1

Application

Massey Ferguson

100 Series: 135, 150

200 Series: 2135, 2200, 231, 235, 240, 250, 265, 275, 290

300 Series: 390, 399, 399T

400 Series: 410, 420, 425, 430, 435, 440, 445, 450, 460, 470, 475, 480, 485, 490, 495

500 Series: 500, 510, 520, 525, 530, 535, 540, 545, 550, 555, 565, 575, 590, 595

600 Series: 600, 610, 620, 625, 630, 635, 640, 645, 650, 655, 660, 665, 670, 675, 680, 685



SB Part No.
SB-1.1.4.12

Description
FRONT AXLE SUPPORT

OEM No.
2528778K91, 1684290M1,
1684301M91, 1870287M95,
13811X, 1684301M91,
2528778K91

Application

Massey Ferguson

235, 240, 245



SCHWARZE BULLE
KEEPS YOU RUNNING!

MASSEY FERGUSON

SB Part No.	Description	OEM No.
SB-1.1.4.13	FRONT AXLE SUPPORT	1660455M5, 2528935K93



Application

Massey Ferguson

100 Series: 165, 188, 175, 178, 185, 188,

200 Series: 265, 276, 286, 290,

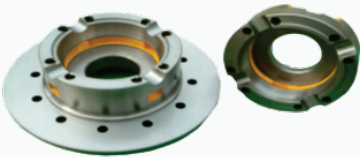
300 Series: 350, 355, 360, 365, 375, 376, 385, 390, 398, 399,

500 Series: 665, 575, 590,

600 Series: 675, 690, 698, 098 T, 699,

Industrial: 50B, 50B MKII

SB Part No.	Description	OEM No.
SB-1.1.4.14	DIFFERENTIAL CASE	1687863M1, 1868031M91,
SB-1.1.4.14.1	L.H & R.H	1860881M1



Application

MASSEY FERGUSON

235, 165, 168, 240, 265, 275, 285

MASSEY FERGUSON

SB Part No.

SB-1.1.4.15

SB-1.1.4.15.1

Description

DIFFERENTIAL CASE

L.H & R.H

OEM No.

181273M1, 893223M2,

1661294M1, 191465M1,

10039YD, 1661294M1

**Application****MASSEYFERGUSON**

235, 255, 375, 385



SCHWARZE BULLE
KEEPS YOU RUNNING!

MASSEY FERGUSON

SB Part No.	Description	OEM No.
SB-1.1.4.16	FRONT AXLE SPINDLE LH	897237M94



Application

Massey Ferguson

Pre-100 Series: 35, 35 GAS / 35 PETROL

100 Series: 135, 135 GAS / 135 PETROL, 148

200 Series: 230, 240, 250

Industrial: 208, 2136

SB Part No.	Description	OEM No.
SB-1.1.4.17	FRONT AXLE SPINDLE RH	897236M94



Application

Massey Ferguson

Pre-100 Series: 35, 35 GAS / 35 PETROL

100 Series: 135, 135 GAS / 135 PETROL, 148

200 Series: 230, 240, 250

Industrial: 208, 2136



SCHWARZE BULLE
KEEPS YOU RUNNING!

MASSEY FERGUSON

SB Part No.	Description	OEM No.
SB-1.1.4.18	HUB FRONT AXLE	886336M1, 886337M91, 886336V1, 886337M1, 886337M91



Application

Massey Ferguson

Pre-100 Series: 3535 GAS / 35 PETROL 66765

100 Series: 135, 135 GAS / 135 PETROL 148, 166, 168, 175, 178

200 Series: 230, 231, 240, 250, 253, 265, 275

300 Series: 340, 342, 350, 360, 375E BRAZILIAN

500 Series: 550, 585

Industrial Tractors: 20B, 20D, 20E, 2135

Landini

30 Series: 5830

MASSEY FERGUSON



SB Part No.	Description	OEM No.
SB-1.1.4.19	FORK SHIFTER	1860773M1, 1860773M2, 1082573M1, 1860660M1, 1860773V1,

Application

Massey Ferguson

100 Series: 133, 135, 135 Gas/Petrol, 135 US Built, 140, 145, 148, 150, 152, 155, 158, 165, 165 US Built, 168, 175, 175 US Built, 185, 188

200 Series: 230, 231, 235 Brazilian, 240, 240S, 243, 245, 250 Brazilian, 253, 255, 260, 261, 263, 265 Brazilian, 265 S (TR), 270, 271, 275 Brazilian, 281, 282, 282 US Built, 283 Brazilian, 285 (FR), 285 S (TR), 285 US Built, 290 Brazilian, 290 US Built, 292 Brazilian, 295 Brazilian, 296 Brazilian, 298

300 Series: 350, 355, 360

Brazilian: 375E, 390E, 415, 425, 435, 440

UZEL Series: 410

4000 Series: 4275

500 Series: 550, 560, 565, 575, 590, 595

Landini

30 Series: 5830, 6030, 7830

SB Part No.	Description	OEM No.
SB-1.1.84	PTO LEVER	1870594M91, 1870594M92, 1870594M93, 1870594M94



Application

Massey Ferguson:

100 Series: 135, 135 Gas/Petrol, 148, 158, 165, 168, 175, 178, 185, 188

200 Series: 230, 231, 235, 240, 245, 260, 253, 256, 265, 275, 282, 283, 285, 290,

300 Series: 350, 360, 362, 376, 383, 390,

500 Series: 550, 560, 565, 575, 590



SCHWARZE BULLE
KEEPS YOU RUNNING!

MASSEY FERGUSON

SB Part No.	Description	OEM No.
SB-1.1.5.1	HYDRAULIC PUMP	1672251M92, 1675125M92, 1683301M92, 1661616M91, 1672148M92, 1868898M98, 1872449M96



HYDRAULIC SYSTEM

Application

Massey Ferguson

100 Series: 133, 135, 140, 148, 152, 158, 165, 168, 185, 188

200 Series: 230, 230 US Built, 231, 235, 240, 245, 250, 253, 255, 263, 270, 275, 282, 282 US Built, 290 US Built,

200 Brazilian Series: 250, 250X, 265, 275, 283, 290, 290, 292, 297, 298, 298, 299

300 Series: 340

400 Brazilian Series: 415, 415, 425, 435, 440, 440, 445, 450, 460, 461, 465, 471, 475, 481, 492

500 Series : 550, 560, 565, 575, 590

600 Brazilian Series: 660

800 Series: 800

Industrial Tractors: 20C, 20D, 20E, 20F, 30, 30B, 30D, 30E, 3140, 40B, 40E, 50, 50C, 50E, 50EX



SCHWARZE BULLE
KEEPS YOU RUNNING!

MASSEY FERGUSON

SB Part No.	Description	OEM No.
SB-1.1.5.1.1	HYDRAULIC PISTON ASSY	1693921M93



HYDRAULIC SYSTEM

Application

Massey Ferguson

100 Series: 133, 135, 140, 148, 152, 158, 165, 168, 185, 188

600 Series: 1004, 1004T, 1104675, 690, 698, 698T, 699

200 Series: 230, 230 US Built, 231, 235, 240, 245, 250, 253, 255, 263, 270, 275, 282, 282 US Built, 290,, 290 US Built, 298

200 Brazilian Series: 250, 250X, 265, 275, 283, 290, 298, 299

300 Series: 340

400 Brazilian Series: 415, 415, 425, 435, 440, 440, 445, 450, 460, 461, 465, 471, 475, 481, 492, 292 Brazilian, 297 Brazilian,

500 Series : 550, 560, 565, 575, 590

600 Brazilian Series: 660

800 Series: 800

Articulated Series: 1200, 1250

Industrial Tractors: 20C, 20D, 20E, 20F, 30, 30B, 30D, 30E, 3140, 40B, 40E, 50, 50C, 50E, 50EX



SCHWARZE BULLE
KEEPS YOU RUNNING!

MASSEY FERGUSON

SB Part No.	Description	OEM No.
SB-1.1.5.1.2	CAM SHAFT HYDRAULIC PUMP	1684620M1,1684620M91, 1684621M1,1868544M91, 1868544M92, 1868545M2, 1868545M91



HYDRAULIC SYSTEM

Application

Massey Ferguson

100 Series: 133, 135, 140, 148, 152, 158, 165, 168, 185, 188

600 Series: 1004, 1004T, 1104675, 690, 698, 698T, 699

200 Series: 230, 230 US Built, 231, 235, 240, 245, 250, 253, 255, 263, 270, 275, 282, 282 US Built, 290,, 290 US Built, 298

200 Brazilian Series: 250, 250X, 265, 275, 283, 290, 298, 299

300 Series: 340

400 Brazilian Series: 415, 415, 425, 435, 440, 440, 445, 450, 460, 461, 465, 471, 475, 481, 492, 292 Brazilian, 297 Brazilian,

500 Series : 550, 560, 565, 575, 590

600 Brazilian Series: 660

800 Series: 800

Articulated Series: 1200, 1250

Industrial Tractors: 20C, 20D, 20E, 20F, 30, 30B, 30D, 30E, 3140, 40B, 40E, 50, 50C, 50E, 50EX



SCHWARZE BULLE
KEEPS YOU RUNNING!

MASSEY FERGUSON

SB Part No.	Description	OEM No.
SB-1.1.5.1.3	HYDRAULIC CHAMBER WITH VALVES (Forged),	1868435M3, 3699709M91



HYDRAULIC SYSTEM

Application

Massey Ferguson

100 Series: 133, 135, 140, 148, 152, 158, 165, 168, 185, 188

Articulated Series: 1200, 1250

200 Series: 230, 230 US Built, 231, 235, 240, 245, 250, 250 Brazilian, 250X Brazilian, 253, 255, 263, 265 Brazilian, 270, 275, 275 Brazilian, 282, 282 US Built, 283 Brazilian, 290, 290 Brazilian, 290 US Built, 292 Brazilian, 297 Brazilian, 298, 298 Brazilian, 299 Brazilian

300 Series: 340

400 Brazilian Series: 415, 415 Brazilian, 425 Brazilian, 435 Brazilian, 440, 440 Brazilian, 445 Brazilian, 450, 460 Brazilian, 461, 465 Brazilian, 471, 475 Brazilian, 481 Brazilian, 492 Brazilian

500 Series : 550, 560, 565, 575, 590

600 Brazilian Series: 660

600 Series: 1004, 1004T, 1104675, 690, 698, 698T, 699

Industrial Tractors: 20C, 20D, 20E, 20F, 30, 30B, 30D, 30E, 3140, 40B, 40E, 50, 50C, 50E, 50EX

800 Series: 800

MASSEY FERGUSON



SB Part No.
SB-1.1.5.1.4

Description
Hydraulic Pump Piston

OEM No.
1860038M1, 518476M1,
897492M1, 1860038V1,
3148071M1, 518475M1

Application

Massey Ferguson

100 Series: 133, 135, 140, 148, 152, 158, 165, 168, 185, 188

600 Series: 1004, 1004T, 1104675, 690, 698, 698T, 699

200 Series: 230, 230 US Built, 231, 235, 240, 245, 250, 253, 255, 263, 270, 275, 282, 282 US Built, 290,, 290 US Built, 298

200 Brazilian Series: 250, 250X, 265, 275, 283, 290, 298, 299

300 Series: 340

400 Brazilian Series: 415, 415, 425, 435, 440, 440, 445, 450, 460, 461, 465, 471, 475, 481, 492, 292 Brazilian, 297 Brazilian,

500 Series : 550, 560, 565, 575, 590

600 Brazilian Series: 660

800 Series: 800

Articulated Series: 1200, 1250

Industrial Tractors: 20C, 20D, 20E, 20F, 30, 30B, 30D, 30E, 3140, 40B, 40E, 50, 50C, 50E, 50EX



SCHWARZE BULLE
KEEPS YOU RUNNING!

MASSEY FERGUSON

SB Part No.	Description	OEM No.
SB-1.1.5.1.5	Hydraulic Pump Piston	3611085, 1681789M91



HYDRAULIC SYSTEM

Application

Massey Ferguson

100 Series: 133, 135, 140, 148, 152, 158, 165, 168, 185, 188

600 Series: 1004, 1004T, 1104675, 690, 698, 698T, 699

200 Series: 230, 230 US Built, 231, 235, 240, 245, 250, 253, 255, 263, 270, 275, 282, 282 US Built, 290,, 290 US Built, 298

200 Brazilian Series: 250, 250X, 265, 275, 283, 290, 298, 299

300 Series: 340

400 Brazilian Series: 415, 415, 425, 435, 440, 440, 445, 450, 460, 461, 465, 471, 475, 481, 492, 292 Brazilian, 297 Brazilian,

500 Series : 550, 560, 565, 575, 590

600 Brazilian Series: 660

800 Series: 800

Articulated Series: 1200, 1250

Industrial Tractors: 20C, 20D, 20E, 20F, 30, 30B, 30D, 30E, 3140, 40B, 40E, 50, 50C, 50E, 50EX



SCHWARZE BULLE
KEEPS YOU RUNNING!

MASSEY FERGUSON

SB Part No.
SB-1.1.5.1.6

Description
ASSEMBLY SAFETY
VALVE

OEM No.
1662591M91, 190537M91,
828927M91 ,828927M92,
883402M92, 883402V92,
884747M92, 884747M93,
884747V93



HYDRAULIC SYSTEM

Application

Massey Ferguson

100 Series: 133, 135, 140, 148, 152, 158, 165, 168, 185, 188

600 Series: 1004, 1004T, 1104675, 690, 698, 698T, 699

200 Series: 230, 230 US Built, 231, 235, 240, 245, 250, 253, 255, 263, 270, 275, 282, 282 US Built, 290,, 290 US Built, 298

200 Brazilian Series: 250, 250X, 265, 275, 283, 290, 298, 299

300 Series: 340

400 Brazilian Series: 415, 415, 425, 435, 440, 440, 445, 450, 460, 461, 465, 471, 475 , 481, 492 , 292 Brazilian, 297 Brazilian,

500 Series : 550, 560, 565, 575, 590

600 Brazilian Series: 660

800 Series: 800

Articulated Series: 1200, 1250

Industrial Tractors: 20C, 20D, 20E, 20F, 30, 30B, 30D, 30E, 3140, 40B, 40E, 50, 50C, 50E, 50EX



SCHWARZE BULLE
KEEPS YOU RUNNING!

MASSEY FERGUSON

SB Part No.	Description	OEM No.
SB-1.1.5.1.Ø	ASSEMBLY SAFETY VALVE	883402M91, 884747M92, 884747M93



HYDRAULIC SYSTEM

Application

Massey Ferguson

100 Series: 133, 135, 140, 148, 152, 158, 165, 168, 185, 188

600 Series: 1004, 1004T, 1104675, 690, 698, 698T, 699

200 Series: 230, 230 US Built, 231, 235, 240, 245, 250, 253, 255, 263, 270, 275, 282, 282 US Built, 290,, 290 US Built, 298

200 Brazilian Series: 250, 250X, 265, 275, 283, 290, 298, 299

300 Series: 340

400 Brazilian Series: 415, 415, 425, 435, 440, 440, 445, 450, 460, 461, 465, 471, 475, 481, 492, 292 Brazilian, 297 Brazilian,

500 Series : 550, 560, 565, 575, 590

600 Brazilian Series: 660

800 Series: 800

Articulated Series: 1200, 1250

Industrial Tractors: 20C, 20D, 20E, 20F, 30, 30B, 30D, 30E, 3140, 40B, 40E, 50, 50C, 50E, 50EX



SCHWARZE BULLE
KEEPS YOU RUNNING!

MASSEY FERGUSON

SB Part No.	Description	OEM No.
SB-1.1.5.1.7	PUMP PLATE FRONT & REAR	1665500M1, 1665610M1



HYDRAULIC SYSTEM

Application

Massey Ferguson

100 Series: 133, 135, 140, 148, 152, 158, 165, 168, 185, 188

600 Series: 1004, 1004T, 1104675, 690, 698, 698T, 699

200 Series: 230, 230 US Built, 231, 235, 240, 245, 250, 253, 255, 263, 270, 275, 282, 282 US Built, 290,, 290 US Built, 298

200 Brazilian Series: 250, 250X, 265, 275, 283, 290, 298, 299

300 Series: 340

400 Brazilian Series: 415, 415, 425, 435, 440, 440, 445, 450, 460, 461, 465, 471, 475, 481, 492, 292 Brazilian, 297 Brazilian,

500 Series : 550, 560, 565, 575, 590

600 Brazilian Series: 660

800 Series: 800

Articulated Series: 1200, 1250

Industrial Tractors: 20C, 20D, 20E, 20F, 30, 30B, 30D, 30E, 3140, 40B, 40E, 50, 50C, 50E, 50EX



SCHWARZE BULLE
KEEPS YOU RUNNING!

MASSEY FERGUSON

SB Part No.	Description	OEM No.
SB-1.1.5.2	HYDRAULIC CROSS LIFT SHAFT	897567M3, 897567V3



HYDRAULIC SYSTEM

Applicable Model

Massey Ferguson

Pre-100 Series: 765

100 Series: 133, 135, 135 GAS/PETROL, 135 US Built, 140, 145, 148, 150, 152, 155, 158, 165, 165 US Built, 168, 175, 175 US Built, 178, 178 US Built, 180, 185, 188

200 Series: 230, 230 US Built, 231, 235, 240, 245, 250, 253, 255, 263, 270, 275, 282, 282 US Built, 290,, 290 US Built, 298

200 Brazilian Series: 250, 250X, 265, 275, 283, 290, 298, 299

300 Series: 340, 342, 350, 352, 355, 360, 362, 365, 372, 375, 375E Brazilian, 382, 383 (Italian Series), 390, 390E Brazilian, 390T, 393 (Italian Series), 396, 398, 399

500 Series : 550, 565, 575, 590, 595

600 Series: 650 (Brazilian), 670, 675, 690, 698, 699

Industrial Tractors: 20, 205, 20C, 20D, 20E, 20F, 30, 30B, 30D, 30E, 40, 40B, 40E, 50, 50C, 50D, 50E, 50EX

Landini

30 Series: 5830, 6030, 7830

500 Series: 9500

Large Series: 9550



SCHWARZE BULLE
KEEPS YOU RUNNING!

MASSEY FERGUSON

HYDRAULIC SYSTEM



SB Part No.
SB-1.1.5.3

Description
ARM LIFT RAM

OEM No.
3610357M2AC

Applicable Model

Massey Ferguson
375, 375S, 375E, 385



SB Part No.
SB-1.1.5.4

Description
HYDRAULIC LIFT COVER

OEM No.
3612130M91, 1870951M91

Applicable Model

Massey Ferguson
350, 360, 365, 375, 385, 390, 390 T, 398, 399



SCHWARZE BULLE
KEEPS YOU RUNNING!

MASSEY FERGUSON



SB Part No.	Description	OEM No.
SB-1.1.6.1	BRAKE ACTUATOR 9"	K 9 4 5 7 5 3 , K 9 4 5 7 5 3 , K 9 6 3 6 4 0 , 8 3 9 0 9 8 0 8 , C7NN2N317A, 1860963M91, 1860963M92, 3538836M91, 411020

Applicable Model

Massey Ferguson

100 Series: 113, 135, 145, 148, 152, 158, 165, 168, 180, 188

200 Series: 240, 245, 250, 255, 260, 261, 263, 270, 275, 282, 283, 285, 290, 292, 296, 297

300 Series: 350, 352, 355, 360, 362, 375, 383 (Italian Series), 390, 390E, 396, 399

500 Series : 550, 565, 575, 590, 595

600 Series: 650 (Brazilian), 670, 675, 690, 698, 699

Industrial Tractors: 20E, 20F, 30, 30B, 30D, 30E, 31, 40, 40B, 40E, 50, 50A, 50C, 50D, 50E

Brazilian Series: 415, 425, 435, 445, 460, 465, 475

Articulated Series: 1200, 1250

Ford New Holland

1000 Series: 5000, 5000 US Built, 5100, 5200, 5600, 5700, 5900

10 Series: 5110, 5610, 6410, 6610, 6710, 6810, 7610, 7710, 7810, 7310, 8210

40 Series: 5340

Backhoe Models: 6500, 7500, 755, 7554, 7558

1000 Series Large: 10000, 13000, 14500

TS Series: TS100, TS110, TS120, Ts90

Other Models: 650 (1954-1957), 660 (1954-1957), 750, 7554, 7558, 765, 7300, 7400

Valmet & Valbra

05 Series: 505, 605, 705, 805

Mezzo Series: 6000, 6100, 6800

55 Series: 655, 6600

Mega Series: 8000, 8100, 8200, 8400

David Brown

1400 Series: 1810, 1412

94 Series: 1994

1690 Series: 1690, 1690 Turbo, 1694

90 Series: 1690, 1694



SCHWARZE BULLE
KEEPS YOU RUNNING!

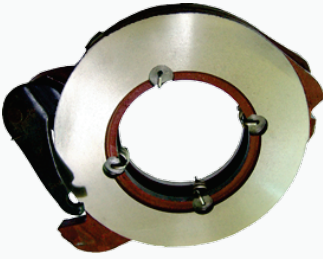
MASSEY FERGUSON

BRAKE SYSTEM

SB Part No.
SB-1.1.6.2

Description
BRAKE ACTUATOR LH

OEM No.
3596776M91



Applicable Model

Massey Ferguson

300 Series: 350, 352, 355, 360, 562, 365, 372, 375, 382, 390, 3901, 396, 398, 399

4000: 4215, 4220, 4225, 4235, 4240, 4245, 4255, 4260, 4265, 4270, 4315, 4320, 4325, 4335, 4360, 4365, 4370,

Brazilian Series: 5340, 5355, 5360, 5365

SB Part No.

Description

OEM No.

SB-1.1.6.3

BRAKE ACTUATOR rH

3596776M91



Applicable Model

Massey Ferguson

300 Series: 350, 352, 355, 360, 562, 365, 372, 375, 382, 390, 3901, 396, 398, 399

4000: 4215, 4220, 4225, 4235, 4240, 4245, 4255, 4260, 4265, 4270, 4315, 4320, 4325, 4335, 4360, 4365, 4370,

Brazilian Series: 5340, 5355, 5360, 5365



SCHWARZE BULLE
KEEPS YOU RUNNING!

MASSEY FERGUSON



SB Part No.
SB-1.1.6.4

Description
BRAKE ASSY.

OEM No.
825040M1, 825040M2,
825041M1, 825041M2,
827143M91, 827143M92,
827143M94

Application

Massey Ferguson

PRE-100 Series: 35, 35 GAS / 35 PETROL, 35X, Fe35

100 Series: 133, 135, 135 GAS / 135 PETROL, 140, 148

200 Series: 230, 231, 235, 240, 245, 250

300 Series: 340

TE20 Series: TEA20, TED20, TEF20

Industrial Tractors: 20D

SB Part No.
SB-1.1.6.5

Description
BRAKE DRUM

OEM No.
181230M1,
827707M3,
827707M4,
827707M5,
827707M6



Application

Massey Ferguson

PRE-100 Series: 35, 35 GAS / 35 PETROL, 35 US BUILT, 35X, Fe35

100 Series: 135, 135 GAS / 135 PETROL, 135 US BUILT, 148, 150

200 Series: 230, 230 US BUILT, 231, 235, 240, 240S, 245, 250 BRAZILIAN

300 Series: 340

500: 550

TE20 Series: TE20, TEA20, TED20, TEF20, To35

Industrial Tractors: 20, 20C, 20D, 2135, 30, 40, 50, 3165



SCHWARZE BULLE
KEEPS YOU RUNNING!

FIAT/NEW HOLLAND

SB Part No.
SB-1.2.1.1

Description
Crankshaft

OEM No.
4785111, 5088486,
98461246, 5088486,
99464932



ENGINE SYSTEM

Applicable Model

IVECO

8035.06.306, 8035.05.306

Fits

66 Serie: 45-66, 50-66, 55-66, 60-66, 60-66F

86 Serie: 50-86

90 Serie: 50-90, 55-90, 60-90

76 Serie: 55-76

88 Serie: 55-88, 60-88

56 Serie: 60-56

93 Serie: 60-93

94 Serie: 60-94

Case IH

JX Series: JX1060CJX55, JX60, JX65



SCHWARZE BULLE
KEEPS YOU RUNNING!

FIAT/NEW HOLLAND

SB Part No.
SB-1.2.1.2

Description
Crankshaft

OEM No.
4 7 8 5 1 0 6 , 1 9 3 0 3 3 0 ,
4679788,



Applicable Model

Fiat

550, 600, 640, 666 , 670, 680 , 766 , 780



SCHWARZE BULLE
KEEPS YOU RUNNING!

FIAT/NEW HOLLAND

SB Part No.	Description	OEM No.
SB-1.2.1.3	CAM SHAFT	4835414, 4603298, 4784946, 4824215, 4824215, TX10069, 11501124, 11501124



ENGINE SYSTEM

Applicable Model

IVECO

8035.06.306, 8035.05.306

Fiat

446 Series: 446, 450

466 Series: 466, 470, 480

500 Series: 500, 540, 566, 570, 580

Allis Chalmers

5000 Series: 5040, 5045, 5050

Long Tractor

2300 Series: 2360, 2360DTC

2400 Series: 2460, 2460DTC, 2460SD, 2460SD-DTC

2500 Series: 2510, 2510SD, 2510SD-DTC

300 Series: 350, 360, 360C

400 Series: 445, 445DT, 445SD, 445V, 460, 460DT, 460SD, 460V

500 Series: 510, 510DT

Universal

300 Series: 350, 353

400 Series: 445, 453

500 Series: 500, 530, 533

White Oliver

1200 Series: 1250A, 1255

1200 Series (Mid-Range): 1265, 1270

2000 Series: 2-50



SCHWARZE BULLE
KEEPS YOU RUNNING!

FIAT/NEW HOLLAND

SB Part No.	Description	OEM No.
SB-1.2.1.3	CAM SHAFT	4835412, 4603154, 4784948, 30-3010511, 4603154, 4824218, 98425868



ENGINE SYSTEM

Applicable Model

IVECO

8045.06.306, 8045.06.306

Fiat

550, 600, 640, 666 , 670, 680 , 766 , 780

Long Tractor

2600 Series: 2610, 2610DT, 2610SD, 2610SD-DTC

500 Series: 550, 550DT

560 Series: 560, 560DT, 560DTE

600 Series: 610, 610C, 610DT, 610DTE

Universal

500 Series: 550, 553

600 Series: 640, 643

White Oliver

1200 Series: 1355, 1365, 1370

2000 Series: 2-6

700 Series: 0700



SCHWARZE BULLE
KEEPS YOU RUNNING!

FIAT/NEW HOLLAND

SB Part No.	Description	OEM No.
SB-1.2.1.5	CONNECTING ROD	93016803, 4679221, 4763919, 4796181



ENGINE SYSTEM

Applicable Model

IVECO

8045.06.3068045.06.306, 8035.06.3068035.05.306

Fiat

Classic Models: 1000, 446 , 450, 466, 480, 500, 540 , 566, 570, 580, 600, 640, 666,670, 680, 766, 980

Allis Chalmers

5000 Series: 5050

White Oliver

700 Series: 700



SCHWARZE BULLE
KEEPS YOU RUNNING!

FIAT/NEW HOLLAND

SB Part No.	Description	OEM No.
SB-1.2.1.6	OIL PUMP	4 7 0 5 8 2 7 , 7 2 0 9 1 6 3 2 , 7 2 0 9 1 6 3 2 V , 0 4 7 0 5 8 2 7 , TX14945, TX10229, 115 08 010, 11508010, 651735, 4654756, 87549330, 87569389



ENGINE SYSTEM

Applicable Model

IVECO

8035.06.306, 8035.05.306

Fiat

Classic Models: 446, 450, 45-66, 45-76, 466, 470, 480, 500, 50-66, 50-86, 540, 550, 55-46, 55-56, 55-65, 55-66, 55-75, 55-76, 55-85, 55-86, 55-88, 55-90, 566, 56-66, 570, 580, 600, 60-46, 60-56, 60-65, 60-66, 60-75, 60-76, 60-85, 60-86, 60-88, 60-90, 60-93, 60-94, 62-85, 62-86, 640, 65-46, 65-56, 65-66, 65-88, 65-90, 65-93, 65-94, 666, 670, 680, 70-56, 70-65, 70-66, 70-75, 70-76, 70-86, 70-88, 70-90, 72-85, 72-86, 72-93, 72-94, 766, 780, 80-65, 80-66, 80-75, 80-76, 80-88, 80-90, 82-66, 82-85, 82-86, 82-93, 82-94, 85-55, 85-90, L60, L65, L75, L85, L95

Allis Chalmers

5040, 5045, 5050

Case IH

AVJ55, AVJ60, AVJ70, JX100U, JX1060C, JX55, JX55T, JX60, JX65, JX70U, JX75, JX75T, JX80, JX80U, JX85, JX90U, VJ60, VJ70, Vj80

Ford New Holland

3010S, 310S, 3435, 3830, 3935, 4010S, 4030, 4135, 4230, 4330, 4430, 4635, 4835, 5010S, 5635, 6635, 7635, TD55D, TD60, TD60D, TD65D, TD75D, TD80, TD80D, TD85D, TK65, TK75, TK76, TK80, TK80A, TK85, TL100, TL65, TL70, TL75, TL80, TL90, TN55, TN55D, TN55S, TN60A, TN60DA, TN60SA, TN65, TN65D, TN65F, TN65S, TN70F, TN75F, TN75FA, TN75N, TN80F, TT4.55, TT4.75

Universal

1033, 300, 320, 340, 350, 353, 445, 453, 530, 533, 550, 640

White Oliver

1250A, 1255, 1265, 1270, 1355, 1365, 1370, 2-50, 2-60, 700



SCHWARZE BULLE
KEEPS YOU RUNNING!

FIAT/NEW HOLLAND



SB Part No.	Description	OEM No.
SB-1.2.1.7	WATER PUMP ASSY	4769032, 72090472, TX10252, 04612675, 04655054, 04679242, 4612675, 4655054, 4679242, 4679303, 82847745, 93191101, 115 11 010, 115 11 044, 11511010, 11511044, 651643, 31-2900665, 72090472

Applicable Model

IVECO

8045.06.306, 8035.06.306, 8035.05.306

Fiat

Classic Models: 1000, 1180, 1280, 1380, 300, 350, 400, 420, 440, 446, 450, 466, 470, 480, 500, 540, 550, 566, 570, 580, 600, 640, 666, 670, 680, 766, 780, 900, 980

Long Tractor

Models: 2260, 2310, 2360, 2360DTC, 2460, 2460DTC, 2460SD, 2460SD-DTC, 2510, 2510DTC, 2510SD, 2510SD-DTC, 260C, 2610, 2610DTC, 2610SD, 2610SD-DTC, 310, 310C, 310DT, 320, 350, 360, 360C, 445, 445DT, 445SD, 460, 460DT, 460SD, 460V, 510, 510DT, 560, 560DT, 560DTE, 610, 610C, 610DT, 610DTE

Universal

Models: 1010, 1033, 300, 320, 340, 350, 353, 445, 453, 500, 530, 533, 550, 553, 640, 643, 703, 850

White Oliver

Models: 1255, 1265, 1270, 1355, 1365, 1370, 2-50, 2-60



SCHWARZE BULLE
KEEPS YOU RUNNING!

FIAT/NEW HOLLAND

ENGINE SYSTEM



SB Part No.
SB-1.2.1.8

Description
FUEL LIFT PUMP
(With Polymer
Membrane)

OEM No.
4757883, 4609596, 4631972,
4648022, 4660069, 4667509,
4709282, 4740717, 4756678,
4757883, 504090935,

Applicable Model

Fiat

48 Series: 55-48

58 Series: 55-56, 80-58

46 Series: 60-48

58 Sorten: 65-48, 65-58, 70-58

Model: 480,

Case IH

AV Series: AV166, A160

AVI Series: AVJ70

SB Part No.
SB-1.2.1.9

Description
Fuel PUMP DRIVE SHAFT

OEM No.
4784054



Applicable Model

Fiat

48 Series: 55-48, 60-48, 85-48

56 Series: 55-58, 85-58, 70-56

58 Series: 60-56

Model: 480, 640

Case IH

AV Series: AV166, A160

AVI Series: AVJ70



SCHWARZE BULLE
KEEPS YOU RUNNING!

FIAT/NEW HOLLAND

ENGINE SYSTEM



SB Part No.
SB-1.2.1.10

Description
FUEL FILTER PRIMARY
WITH FILTER ELEMENT

OEM No.
4612229, 04612229,
09927913, 4612229,
86556136, 9927913

Applicable Model

Fiat

48 Series: 55-65, 55-66, 55-90

60 Series: 60-65, 60-66, 60-90

Universal:

1033, 300, 340, 350, 445, 453, 500, 530, 533, 550, 640, 643, 703



SB Part No.
SB-1.2.1.11

Description
FUEL FILTER SECONDARY
WITH FILTER ELEMENT

OEM No.
4616707

Application

Fiat

48 Series: 55-65, 55-66, 55-90

60 Series: 60-65, 60-66, 60-90

Universal:

300, 340, 350, 500, 550, 640



SCHWARZE BULLE
KEEPS YOU RUNNING!

FIAT/NEW HOLLAND

SB Part No.	Description	OEM No.
SB-1.2.1.12	SUPPORT ROCKER SHAFT	4781935, 4000380, 40101341, 98461686



ENGINE SYSTEM

Applicable Model

Fiat

48 Series: 55-48, 60-46, 65-46

60 Series: 55-58, 60-56, 65-56, 70-58

Models: 480, 640

Case IH

AV Series: AV166, A160

AVI Series: AVJ70



SCHWARZE BULLE
KEEPS YOU RUNNING!

FIAT/NEW HOLLAND



SB Part No.
SB-1.2.1.13

Description
STARTER MOTOR
(MAKO DESIGN),

OEM No.
4745929, C000900060030,
0001362032, 0001362039,
,0001362332,098601267,
00986012671, 1362105,
6005706617, 4169096,
4172113, 4682998, 4710224,
4722682,

Applicable Model

Fiat

48 Series: 55-48

58Series: 55-58

46Series: 60-46, 65-46

56 Series: 60-56, 65-56, 70-58

Models: 480, 640

Case IH

AV Series: AV166, A160

AVI Series: AVJ70



SB Part No.
SB-1.2.1.14

Description
STARTER MOTOR
(MAKO DESIGN),

OEM No.
5 1 0 1 6 4 5 , L R A 0 0 7 7 9 ,
LRA00975, LRA779, 7565244,
4 1 5 2 6 1 2 , 7 7 5 1 5 4 1 0 ,
4 6 2 3 1 7 5 1 , 4 7 1 1 7 0 0 ,
4 7 2 1 5 8 7 , 4 7 8 7 5 9 8 ,
0120489761, AL913X,
42498239, 4808497, Va306,
436105, Ia0336, 4808498,
4808498, C000900010070,
0120489106, 0120489145,

Applicable Model

Ford New Holland

35 Series: 3435, 3935, 4135, 4835, 5635, 6635, 7635

30 Series: 4330, 4430, 3830, 4230, 4030



SCHWARZE BULLE
KEEPS YOU RUNNING!

FIAT/NEW HOLLAND

CLUTCH SYSTEM



SB Part No.
SB-1.2.2.1

Description
CLUTCH ASSY

OEM No.
5106951, 5116050,
5121198, 5121603,
5121798, 5145712,
5016042, 628105309,
228007712, 328018616,
5154703, 5150647

Applicable Model

Fiat

Classic Models: 446, 466, 480, 500, 540, 550, 566, 570, 580, 600, 640, 666, 670, 680, 766, 780

46 Series: 55-46, 65-46

66 Series: 55-66, 60-66, 65-66, 70-66, 80-66

76 Series: 70-76

90 Series: 55-90, 60-90, 65-90, 70-90, 80-90, 85-90

93 Series: 65-93, 72-93

94 Series: 65-94, 72-94

Allis Chalmers

5040, 5045, 5050, 6060, 6070

Universal

Models: 320, 353, 445, 453, 500, 530, 533, 550, 640, 643, 683, 703

White Oliver

Models: 1355, 1365, 1370, 2-50, 2-60, 700



SCHWARZE BULLE
KEEPS YOU RUNNING!

FIAT/NEW HOLLAND

SB Part No.	Description	OEM No.
SB-1.2.2.2	CLUTCH COVER	9919424



CLUTCH SYSTEM

Applicable Model

Fiat

Classic Models: 446, 466, 480, 500, 540, 550, 566, 570, 580, 600, 640, 666, 670, 680, 766, 780

46 Series: 55-46, 65-46

66 Series: 55-66, 60-66, 65-66, 70-66, 80-66

76 Series: 70-76

90 Series: 55-90, 60-90, 65-90, 70-90, 80-90, 85-90

93 Series: 65-93, 72-93

94 Series: 65-94, 72-94

Allis Chalmers

5040, 5045, 5050, 6060, 6070

Universal

Models: 320, 353, 445, 453, 500, 530, 533, 550, 640, 643, 683, 703

White Oliver

Models: 1355, 1365, 1370, 2-50, 2-60, 700



SCHWARZE BULLE
KEEPS YOU RUNNING!

FIAT/NEW HOLLAND

SB Part No.	Description	OEM No.
SB-1.2.2.3	CLUTCH PRESSURE PLATE	9919436



CLUTCH SYSTEM

Applicable Model

Fiat

Classic Models: 446, 466, 480, 500, 540, 550, 566, 570, 580, 600, 640, 666, 670, 680, 766, 780

46 Series: 55-46, 65-46

66 Series: 55-66, 60-66, 65-66, 70-66, 80-66

76 Series: 70-76

88 Series: 70-88, 80-88

90 Series: 55-90, 60-90, 65-90, 70-90, 80-90, 85-90

93 Series: 65-93, 72-93

94 Series: 65-94, 72-94

Allis Chalmers

5040, 5045, 5050, 6060, 6070

Universal

Models: 320, 353, 445, 453, 500, 530, 533, 550, 640, 643, 683, 703

White Oliver

Models: 1355, 1365, 1370, 2-50, 2-60, 700



SCHWARZE BULLE
KEEPS YOU RUNNING!

FIAT/NEW HOLLAND

SB Part No.	Description	OEM No.
SB-1.2.2.4	CLUTCH PTO PLATE	9919439



CLUTCH SYSTEM

Applicable Model

Fiat

Classic Models: 446, 466, 480, 500, 540, 550, 566, 570, 580, 600, 640, 666, 670, 680, 766, 780

46 Series: 55-46, 65-46

66 Series: 55-66, 60-66, 65-66, 70-66, 80-66

76 Series: 70-76

88 Series: 70-88, 80-88

90 Series: 55-90, 60-90, 65-90, 70-90, 80-90, 85-90

93 Series: 65-93, 72-93

94 Series: 65-94, 72-94

Allis Chalmers

5040, 5045, 5050, 6060, 6070

Universal

Models: 320, 353, 445, 453, 500, 530, 533, 550, 640, 643, 683, 703

White Oliver

Models: 1355, 1365, 1370, 2-50, 2-60, 700



SCHWARZE BULLE
KEEPS YOU RUNNING!

FIAT/NEW HOLLAND



SB Part No.
SB-1.2.2.5

Description
CLUTCH FRICTION
DRIVEN PLATE

OEM No.
5106854, 5120424, 5145715,
5154703, 5011874, 5085403,
5085416, 5106854, 5145715,
5152710, 5154703, 5156221,
5158626, 5160411, 9919182,
5016032, 5092786, 5092788,
5097926, 5101585, 5160412,
5167925, 9919441

Applicable Model

Fiat

Classic Models: 446, 466, 480, 500, 540, 550, 566, 570, 580, 600, 640, 666, 670, 680, 766, 780

46 Series: 55-46, 65-46

66 Series: 55-66, 60-66, 65-66, 70-66, 80-66

76 Series: 70-76

88 Series: 70-88, 80-88

90 Series: 55-90, 60-90, 65-90, 70-90, 80-90, 85-90

93 Series: 65-93, 72-93

94 Series: 65-94, 72-94

Allis Chalmers

5040, 5045, 5050, 6060, 6070

Universal

Models: 320, 353, 445, 453, 500, 530, 533, 550, 640, 643, 683, 703

White Oliver

Models: 1355, 1365, 1370, 2-50, 2-60, 700



SCHWARZE BULLE
KEEPS YOU RUNNING!

FIAT/NEW HOLLAND



SB Part No.
SB-1.2.3.1

Description
STEERING ASSY

OEM No.
5110273, 4950046,
5086594, 5105413,
5110273, 87694770

Applicable Model

Fiat

Classic Models: 450, 480, 540, 640,

White Oliver

2-60



SB Part No.
SB-1.2.3.2

Description
STEERING BODY

OEM No.
9957027

Applicable Model

Fiat / New Holland

480, 640, 6405



SCHWARZE BULLE
KEEPS YOU RUNNING!

FIAT/NEW HOLLAND

STEERING & TIE ROAD SYSTEM

SB Part No.	Description	OEM No.
SB-1.2.3.3	STEERING SHAFT ASSY	9957029



Applicable Model

Fiat / New Holland

480, 640, 5000, 5100, 5600, 5610, 6600, 6600C, 6610, 7000, 7600

SB Part No.	Description	OEM No.
SB-1.2.3.4	ROLLER SHAFT	9957002



Applicable Model

Fiat / New Holland

480, 640, 5000, 5100, 5600, 5610, 6600, 6600C, 6610, 7000, 7600

SB Part No.	Description	OEM No.
SB-1.2.3.5	LEVER STEERING CONTROL	5113829



Applicable Model

Fiat / New Holland

480, 640, 5000, 5100, 5600, 5610, 6600C, 6610, 7000, 7600



SCHWARZE BULLE
KEEPS YOU RUNNING!

FIAT/NEW HOLLAND

SB Part No.	Description	OEM No.
SB-1.2.3.5	LEVER RELAY	4973658, TX12493, P0280, P04202, 4030262



STEERING & TIE ROAD SYSTEM

Applicable Model

Fiat

Classic Models: 411R, 415, 450, 480, 500, 540, 550, 600, 640

46 Series: 55-46, 65-46

66 Series: 55-66, 60-66, 65-66, 70-66, 80-66

76 Series: 70-76

88 Series: 70-88, 80-88

90 Series: 55-90, 60-90, 65-90, 70-90, 80-90, 85-90

93 Series: 65-93, 72-93

94 Series: 65-94, 72-94

Allis Chalmers

5040, 5045, 5050

Long Tractor

Models: 260C, 310, 310C, 350, 360, 360C, 445, 445SD, 445V, 460, 460SD, 460V, 510, 550, 560, 610, 610C

Universal

Tractors: 1033, 300, 340, 350, 445, 500, 530, 550, 640L, 640V

White Oliver

Models: 1255, 1265, 1270, 1355, 1365, 1370, 2-50, 2-60



SCHWARZE BULLE
KEEPS YOU RUNNING!

FIAT/NEW HOLLAND

SB Part No.	Description	OEM No.
SB-1.2.3.7	STEERING ARM	588768, 588299,
SB-1.2.3.7.1	(LH) / RH	Tx10825, Tx10826,



STEERING & TIE ROAD SYSTEM

Applicable Model

Fiat

Classic Models: 411R, 415, 450, 480, 500, 540, 550, 600, 640

Allis Chalmers

5040, 5045, 5050

Long Tractor

2260, 2310, 260C, 310, 310C, 320, 360C, 610C

Universal

1033, 300, 340, 350, 445, 500, 530, 550, 640L, 640V

White Oliver

1250, 1250A, 1255, 1265, 1270, 1355, 1365, 1370, 2-50, 2-60



SCHWARZE BULLE
KEEPS YOU RUNNING!

FIAT/NEW HOLLAND

SB Part No.	Description	OEM No.
SB-1.2.4.1	PLANETARY CARRIER ASSY	4986426, TX10507, 4017016, 4017117, 4017156, 4017158, 4017016, 4017117, 4017156, 4017158, STAS 6742, STAS6742, 4986426A, 672606A, VPX2612



Applicable Model

Fiat

46 Series: 55-46, 60-46, 65-46

56 Series: 55-56, 60-56, 65-56, 70-56

Allis Chalmers

5045, 5050, 6060

Case IH

AVJ Series: AVJ55, AVJ60, AVJ70

Ford New Holland

3010S, 4010S, 5010S, TT65D

Long Tractor

2310, 2360, 2360DTC, 2460, 2460DTC, 2460SD, 2460SD-DTC, 2510, 2510DTC, 2510SD, 2510SD-DTC, 260C, 2610, 2610DTC, 2610SD, 2610SD-DTC, 310, 310C, 310DT, 350, 360, 360C, 445, 445DT, 445SD, 445V, 460, 460DT, 460SD, 460V, 510, 510DT, 550, 550DT, 560, 560DT, 560DTC, 610, 610DT, 610DTE

White Oliver

1250, 1250A, 1255, 1265, 1270, 1355, 1365, 1370, 2-50, 2-60



SCHWARZE BULLE
KEEPS YOU RUNNING!

FIAT/NEW HOLLAND

SB Part No.	Description	OEM No.
SB-1.2.4.2	GEAR REDUCTION	563485



Applicable Model

Fiat

46 Series: 55-46, 55-46DT, 60-46, 60-46DT, 65-46, 65-46DT

56 Series: 55-56, 55-56DT, 60-56DT, 65-56, 65-56DT

Case IH

AVJ Series: AVJ55, AVJ60

JX Series: JX55T

Ford

3010S, 4010S, 5010S, 3630

New Holland

TT Series: Tt50, TT55, TT65, TT65D, Tt75

SB Part No.	Description	OEM No.
SB-1.2.4.3	GEAR REDUCTION	593249



Applicable Model

Fiat / New Holland

640, 640S



SCHWARZE BULLE
KEEPS YOU RUNNING!

FIAT/NEW HOLLAND

SB Part No.	Description	OEM No.
SB-1.2.4.4	GEAR PTO	4970715



Applicable Model

Fiat / New Holland

Classic Models: 480, 480S

46 Series: 55-46, 55-46DT, 60-46, 60-46DT, 65-46, 65-46DT



SCHWARZE BULLE
KEEPS YOU RUNNING!

FIAT/NEW HOLLAND

SB Part No.	Description	OEM No.
SB-1.2.4.5	SLEEVE SPLITTER GEAR	5109000, 5085863



Applicable Model

Fiat

46 Series: 55-46, 60-46, 65-46

56 Series: 55-56, 60-56, 65-56, 70-56

Case IH

AVJ Series: AVJ55, AVJ60, AVJ70

Ford New Holland

3010S, 4010S, 5010S, TT65D



SCHWARZE BULLE
KEEPS YOU RUNNING!

FIAT/NEW HOLLAND

SB Part No.	Description	OEM No.
SB-1.2.4.6	SHAFT GEAR 1st & 2nd	598176



Applicable Model

Fiat

Classic Models: 450, 480, 500, 540, 550, 600, 640

46 Series: 55-46, 60-46, 65-46

56 Series: 55-56, 60-56, 65-56, 70-56

Allis Chalmers

5040, 5045, 5050

Case IH

AVJ Series: AVJ55, AVJ60, AVJ70

Ford New Holland

TT65D

Long Tractor

2360, 2360DTC, 2460, 2460DTC, 2460SD, 2460SD-DTC, 2510, 2510DTC, 2510SD, 2510SD-DTC, 2610, 2610DTC, 2610SD, 2610SD-DTC, 320, 460, 460DT, 460SD, 460V, 510, 510DT, 560, 560DT, 560DTE, 610, 610C, 610DT, 610DTE

Universal

353, 445, 453, 500, 530, 533, 550, 553, 640, 643, 703

White Oliver

1355, 1365, 1370, 2-50, 2-60



SCHWARZE BULLE
KEEPS YOU RUNNING!

FIAT/NEW HOLLAND



SB Part No.
SB-1.2.4.7

Description
GEAR DRIVE REVERSE

OEM No.
598185, 00598185,
Tx14783, 4817110

Applicable Model

Fiat

Classic Models: 480, 500, 600, 640, 450, 415, 540, 550

46Series: 55-46, 60-46, 65-46

56Series: 55-56, 60-56, 65-56, 70-56



SB Part No.
SB-1.2.4.8

Description
Transmission Gear

OEM No.
05102789, 5102789,
598179, TX14775,
4817102, 30-301175

Applicable Model

Fiat

Classic Models: 480, 500, 600, 640, 450, 415, 540, 550

46Series: 55-46, 60-46, 65-46

56Series: 55-56, 60-56, 65-56, 70-56



SCHWARZE BULLE
KEEPS YOU RUNNING!

FIAT/NEW HOLLAND

SB Part No.	Description	OEM No.
SB-1.2.4.9	Transmission Gear Lower Shaft	5102790, 598180, 00598180, VPX2592



Applicable Model

Fiat

Classic Models: 480, 640

46 Series: 55-46, 60-46, 65-46

56 Series: 55-56, 60-56, 65-56, 70-56

Case IH

AVJ Series: AVJ55, AVJ60, AVJ70

Ford New Holland

TT65D



SCHWARZE BULLE
KEEPS YOU RUNNING!

FIAT/NEW HOLLAND

SB Part No.	Description	OEM No.
SB-1.2.4.10	Gear Drive 3rd Reverse	5109834, 5109834, 598178



Applicable Model

Fiat

Classic Models: 480, 640

46 Series: 55-46, 60-46, 65-46

56 Series: 55-56, 60-56, 65-56, 70-56

Case IH

AVJ Series: AVJ55, AVJ60, AVJ70

Ford New Holland

TT65D



SCHWARZE BULLE
KEEPS YOU RUNNING!

FIAT/NEW HOLLAND

SB Part No.	Description	OEM No.
SB-1.2.4.11	Transmission Gear Lower Shaft	5102790, 598180, 00598180, VPX2592



Applicable Model

Fiat

Classic Models: 450, 480, 500, 540, 550, 600, 640

46 Series: 55-46, 60-46, 65-46

56 Series: 55-56, 60-56, 65-56, 70-56

Allis Chalmers

5040, 5045, 5050

Case IH

AVJ Series: AVJ55, AVJ60, AVJ70

Ford New Holland

TT65D

Long Tractor

2360, 2360DTC, 2460, 2460DTC, 2460SD, 2460SD-DTC, 2510, 2510DTC, 2510SD, 2510SD-DTC, 2610, 2610DTC, 2610SD, 2610SD-DTC, 320, 460, 460DT, 460SD, 460V, 510, 510DT, 560, 560DT, 560DTE, 610, 610C, 610DT, 610DTE

Universal

Tractors: 353, 445, 453, 500, 530, 533, 550, 553, 640, 643, 703

White Oliver

1355, 1365, 1370, 2-50, 2-60



SCHWARZE BULLE
KEEPS YOU RUNNING!

FIAT/NEW HOLLAND

SB Part No.	Description	OEM No.
SB-1.2.4.12	Transmission Gear	5109833



Applicable Model

New Holland

TT Series: TT75, TT75A, TT55, TT60A

Classic Models: 65-46, 60-56, 65-46 DT, 60-56 DT, 55-46, 65-56, 55-46 DT, 55-56, 70-56LMS, 70-56, 480S, 640

CASE IH

AVJ Series: AVJ55, AVJ60, AVJ70

SB Part No.	Description	OEM No.
SB-1.2.4.12	AXLE SHAFT (LH + RH),	4999675, 4999674, 5144053
SB-1.2.4.13		



Applicable Model

Fiat

440, 450, 480-8

New Holland

55-46, 55-46 DT,



SCHWARZE BULLE
KEEPS YOU RUNNING!

FIAT/NEW HOLLAND

SB Part No.

SB-1.2.4.14

SB-1.2.4.15

Description

AXLE SHAFT

(LH + RH),

OEM No.

4981704, 4981703



Applicable Model

Fiat / New Holland

640, 640S



SCHWARZE BULLE
KEEPS YOU RUNNING!

FIAT/NEW HOLLAND

SB Part No.	Description	OEM No.
SB-1.2.4.16	COUNTER SHAFT	5102795, 31-2905297, 5102788



TRANSMISSION & AXLE SYSTEM

Applicable Model

Fiat

Classic Models: 450, 480, 500, 540, 550, 600, 640

46 Series: 55-46, 60-46, 65-46

56 Series: 55-56, 60-56, 65-56, 70-56

Allis Chalmers

5040, 5045, 5050

Case IH

AVJ Series: AVJ55, AVJ60, AVJ70

Farmall: 65A, 75A, JX40T, JX45T, JX55T, JX75T

Ford New Holland

Tractors: 3010S, 3600 (100 Series), 3630, 4010S, 5010S, 5630

Backhoes: 5500, 6500, 7500

TT Series: TT35, TT39, TT40, TT45, TT50, TT55, TT65, TT65D, Tt75

Workmaster Series: WORKMASTER 65, WORKMASTER 75

White Oliver

2-60



SCHWARZE BULLE
KEEPS YOU RUNNING!

FIAT/NEW HOLLAND

TRANSMISSION & AXLE SYSTEM



SB Part No.	Description	OEM No.
SB-1.2.4.17	SHAFT PTO DRIVEN GEAR	4959916, TX11115, 4042104, 4042104

Applicable Model

Fiat

Classic Models: 450, 480, 500, 540, 550, 600, 640

Allis Chalmers

5040, 5045, 5050

Case IH

AVJ Series: AVJ55, AVJ60, AVJ70

Long Tractor

Models: 2360DTC, 2460DTC, 2510DTC, 260C, 2610SD-DTC, 310, 310C, 310DT, 350, 360, 360C, 445, 445DT, 445SD, 445V, 460, 460DT, 460SD, 460V, 510, 510DT, 610, 610C, 610DT, 610DTE

Universal

Tractors: 1033, 300, 340, 350, 353, 445, 453, 500, 530, 533, 550, 640, 643

White Oliver

1250A, 1255, 1265, 1270, 1355, 1365, 1370, 2-50, 2-60

SB Part No.	Description	OEM No.
SB-1.2.4.18	SHAFT PTO DRIVE	4970728



Applicable Model

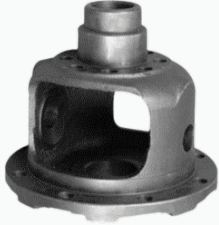
Fiat / New Holland

480, 480S



SCHWARZE BULLE
KEEPS YOU RUNNING!

FIAT/NEW HOLLAND



SB Part No.	Description	OEM No.
SB-1.2.4.19	DIFFERENTIAL CASE	5102649

Applicable Model

Fiat / New Holland

480, 640, 640s

SB Part No.	Description	OEM No.
SB-1.2.4.20	GEAR LEVER	598293, TX14791, 4817118



Applicable Model

Fiat

46 Series: 55-46, 60-46, 65-46

56 Series: 55-56, 60-56, 65-56, 70-56, 480, 480S

Allis Chalmers

5040, 5045, 5050

Case IH

AVJ Series: AVJ55, AVJ60, AVJ70

Long Tractor

2360, 2360DTC, 2460, 2460DTC, 2460SD, 2460SD-DTC, 2510, 2510DTC, 2510SD, 2510SD-DTC, 2610, 2610DTC, 2610SD, 2610SD-DTC, 320, 360, 3500, 460, 4600T, 460SD, 510, 5100T, 560, 5600T, 5600TE, 610, 610C, 510DT, 610DTE

Universal

Tractors: 320, 353, 445, 453, 500, 530, 533, 550, 553, 640, 643, 683

White Oliver

1355, 1365, 1370, 2-50, 2-60



SCHWARZE BULLE
KEEPS YOU RUNNING!

FIAT/NEW HOLLAND

SB Part No.
SB-1.2.4.21

Description
COLLAR ASSY

OEM No.
5117626, 1000827, TX10653,
100085, 100086L, 100086R,
109031, 109081, 4024012



Applicable Model

Ford / New Holland
360



SCHWARZE BULLE
KEEPS YOU RUNNING!

FIAT/NEW HOLLAND

SB Part No.	Description	OEM No.
SB-1.2.4.22	GEAR BUSH	5101537



Applicable Model

Fiat

46 Series: 55-46, 60-46, 65-46

56 Series: 55-56, 60-56, 65-56, 70-56, 480, 480S

66 Series: 55-66, 60-66, 65-66, 70-66

75 Series: 60-75, 65-75, 70-75, 80-75

76 Series: 60-76, 65-76, 70-76, 80-76

88 Series: 60-88, 65-88, 70-88, 80-88

90 Series: 60-90, 65-90, 70-90, 80-90

93 Series: 60-93, 65-93, 70-93, 80-93

94 Series: 60-94, 65-94, 70-94, 80-94

85 Series: 62-85, 72-85, 80-85

86 Series: 62-86, 72-86, 80-86

93 Series: 72-93, 80-93

94 Series: 72-94, 80-94

Case IH

AVJ Series: AVJ55, AVJ60, AVJ70

105A, 110U, 115A, 120U

65A, 75A, 85A, 95A, 95C

JX Series: JX100, JX110, JX70, JX75, JX80, JX90, JX100U, JX1070U, JX1080U, JX1090U, JX1100U, JX55, JX55T, JX60, JX65, JX70, JX70U, JX75, JX75T, JX80, JX80U, JX85, JX90, JX90U, Jx95

JXU Series: JXU 105, JXU 115, JXU 75, JXU 85, JXU 95

VJ Series: VJ60, VJ70, Vj80

82-86 Series: 82-86, 82-93, 82-94

90 Series: 85-90, 88-93, 88-94

L Series: L60, L65, L75, L85, L95

Ford New Holland

Series: 3010S, 3600, 4010S, 4030, 4230, 4430, 4635, 4835, 5010S, 5500 (Backhoe), 5635, 6635, 7635, T4.105, T4.115, T4.75, T4.85, T4.95, T5.105, T5.115, T5.95, T5030, T5040, T5050, T5060, T5070

WORKMASTER: 65, 75

White Oliver

2-60



SCHWARZE BULLE
KEEPS YOU RUNNING!

FIAT/NEW HOLLAND



SB Part No.	Description	OEM No.
SB-1.2.4.23	GEAR SPACER	593656

Applicable Model

Fiat

46 Series: 55-46, 60-46, 65-46

56 Series: 55-56, 60-56, 65-56, 70-56, 480, 480S

58 Series: 55-58, 60-58, 65-58, 70-58

80 Series: 80-58

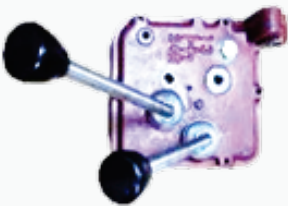
480 Series: 480, 640, 540

Case IH

AV Series: AV166, A160

AVI Series: AVJ70

SB Part No.	Description	OEM No.
SB-1.2.4.24	GEAR SHIFT ASSY	5112114



Applicable Model

Fiat

46 Series: 55-46, 60-46, 65-46

56 Series: 55-56, 60-56, 65-56, 70-56

58 Series: 55-58, 60-58, 65-58, 70-58

80 Series: 80-58

480 Series: 480, 640, 540

Case IH

AV Series: Av166, A160

AVI Series: AVJ70



SCHWARZE BULLE
KEEPS YOU RUNNING!

FIAT/NEW HOLLAND

SB Part No.	Description	OEM No.
SB-1.2.5.1	COVER LIFT BODY	4982243



HYDRAULIC SYSTEM

Applicable Model

Fiat

48 Series: 55-48, 60-48, 65-48

58 Series: 55-56, 65-58, 70-58, 80-58

Case IH

AV Series: AV166, A160

AVI Series: AVJ70



SCHWARZE BULLE
KEEPS YOU RUNNING!

FIAT/NEW HOLLAND

HYDRAULIC SYSTEM



SB Part No.
SB-1.2.5.2

Description
HYDRAULIC PISTON

OEM No.
4981457, TX12277,
5058022, 7601580352,
31-2902261

Applicable Model

Fiat

48 Series: 55-48, 60-48, 65-48

58 Series: 55-56, 65-58, 70-58, 80-58

Additional Models: 480

Case IH

AV Series: AV166, A160

AVI Series: AVJ70

Ford New Holland

T Series: T66

SB Part No.
SB-1.2.5.3

Description
HYDRAULIC SLEEVE

OEM No.
4981455, 5105648,
TX12278, 31-2902260



Applicable Model

Fiat

48 Series: 55-48, 60-48, 65-48

58 Series: 55-56, 65-58, 70-58, 80-58

Case IH

AV Series: AV166, A160

AVI Series: AVJ70

Ford New Holland

T Series: T66



SCHWARZE BULLE
KEEPS YOU RUNNING!

FIAT/NEW HOLLAND

SB Part No.	Description	OEM No.
SB-1.2.5.4	HYDRAULIC VALVE WITH HANDLE	588771



Applicable Model

Fiat

48 Series: 55-48, 65-48

58 Series: 55-56, 65-58, 70-58, 80-58

46 Series: 60-48

Case IH

AV Series: AV166, A160

AVI Series: AVI70

Ford New Holland

T Series: T66



SCHWARZE BULLE
KEEPS YOU RUNNING!

FIAT/NEW HOLLAND



SB Part No.	Description	OEM No.
SB-1.2.6.1	BRAKE ACTUATOR	5123164

Applicable Model

Fiat

46 Series: 55-46, 55-46DT, 60-46, 60-46DT, 65-46, 65-46DT

56 Series: 55-56, 55-56DT, 60-56, 60-56DT, 65-56, 65-56DT

70-56 Series: 70-56DT, 70-56L

66 Series: 45-66, 45-66DT, 45-66S, 45-66SDT, 45-66V, 50-66, 50-66DT, 50-66S, 50-66SDT, 55-66, 55-66DT LP, 55-66S, 55-66SDT, 56-66S, 56-66SDT, 60-66, 60-66DT, 60-66S, 60-66SDT, 65-66, 65-66DT, 65-66S, 65-66SDT, 70-66, 70-66DT, 70-66F, 70-66LP, 70-66S, 70-66SDT, 80-66, 80-66DT, 80-66F

76 Series: 45-76V, 55-76F, 55-76FDT, 55-76V, 55-76VDT

86 Series: 50-86SVDT, 50-86V, 50-86VDT, 55-86F, 55-86FDT, 55-86SV, 55-86V, 55-86VDT, 60-86F, 60-86FDT, 60-86SV, 60-86SVDT, 60-86V, 60-86VDT, 62-86F, 62-86FDT, 70-86SV, 70-86SVDT, 70-86V, 70-86VDT, 72-86F, 72-86FDT, 72-86LP, 72-86LPDT, 82-86F, 82-86FDT, 82-86LP, 82-86LPDT

Ford

30 Series: 3830, 4030, 4230, 4430

35 Series: 3435, 3935, 4135

SB Part No.	Description	OEM No.
SB-1.2.6.2	BRAKE ACTUATOR	5129497



Applicable Model

Fiat / New Holland

640 /640S



SCHWARZE BULLE
KEEPS YOU RUNNING!

FIAT/NEW HOLLAND

SB Part No.
SB-1.2.6.3

Description
LEVER BRAKE BAND

OEM No.
4959354, 5112680,
5112680, TX10938,
4035128



BRAKE SYSTEM

Applicable Model

Flat

46 Series : 60-46

48 Series : 55-48, 65-48

58 Series : 55-50, 65-58, 70-58

Case IH

AV Series : Av166, A180

AVI Series : AVJ70

Ford New Holand

T6D



SCHWARZE BULLE
KEEPS YOU RUNNING!

JOHN DEERE



SB Part No.
SB-1.3.4.1

Description
PLANETARY CARRIER -
HUB HOUSING

OEM No.
R238229, R201555,
169966, R88215, R99681

Applicable Model

John Deere

7185J, 7210, 7410, 7510, 7610, 7630, 7710, 7715,
7720, 7730, 7810, 7815, 78207920



SB Part No.
SB-1.3.4.2

Description
PLANETARY CARRIER -
HUB HOUSING

OEM No.
L60110, 26/6401-2

Applicable Model

John Deere

2040, 2141, 2541, 2941, 2450, 2650, 2850



SCHWARZE BULLE
KEEPS YOU RUNNING!

JOHN DEERE



SB Part No.
SB-1.3.4.3

Description
PLANETARY CARRIER -
HUB HOUSING

OEM No.
L157626, L171156

Applicable Model

John Deere

6320, 6420, 6420 S, 6020 SE, 6120 SE, 6220 SE, 6320 SE, 6420 SE,
6130, 6230, 6330, 6430, 6215, 6515



SB Part No.
SB-1.3.4.4

Description
PLANETARY CARRIER -
HUB HOUSING

OEM No.
H168125

Applicable Model

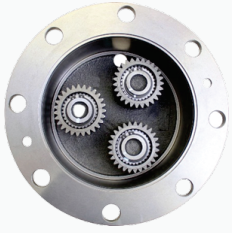
John Deere

6620, 9400, 9410, 9450, 9500, 9510, 9550, 9560, 9600, 9610, 9650,
9650CTS, 9650STS



SCHWARZE BULLE
KEEPS YOU RUNNING!

JOHN DEERE



SB Part No.
SB-1.3.4.5

Description
PLANETARY CARRIER -
HUB ASSEMBLY

OEM No.
Re271421

Applicable Model

John Deere

5045E, 5055E, 5065E, 5075E, 5076E, 5082E, 5083E, 5085E, 5090E, 5090EH (Hi-Clearance), 5093E, 5203 (ASN 005569), 5303 (ASN 007751), 5325, 5403 (ASN 001357), 5415, 5415H, 5425, 5525, 5603, 5605 (SN 080729-090475), 5615, 5625, 5705 (ASN080729), 5715, 5715HC, 5725 (ASN 005048), 5065M, 5075M, 5095M, 5095MH, 5100M, 5100MH, 5100ML, 5105M, 5105ML, 5115ML, 5100ML, 5105ML, 5115ML, 5095MH, 5715HC, 5101E, 5103 (ASN 013640)

SB Part No.
SB-1.3.4.6

Description
PLANETARY CARRIER -
ASSEMBLY

OEM No.
1886634M91



Applicable Model

John Deere

30, 40, 50, 50A, 202, 203, 204, 205, 304, 2200, 25000



SCHWARZE BULLE
KEEPS YOU RUNNING!

JOHN DEERE

SB Part No.	Description	OEM No.
SB-1.3.4.7	PLANETARY CARRIER - ASSEMBLY	L35145



Applicable Model

John Deere

2010, 2011, 2020, 2020, 30, 1130, 1630, 1830, 203

TRANSMISSION & AXLE SYSTEM



SB Part No.	Description	OEM No.
SB-1.3.4.8	PLANET CARRIER - HOUSING	R296985

Applicable Model

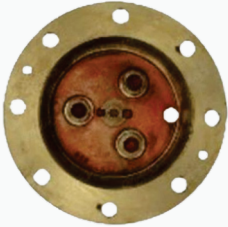
John Deere

8110, 8210, 8310, 8410, 8320, 8420, 8120, 8220, 8320, 8520, 9200, 9120, 9220,
9320, 8225R, 8245R, 8270R, 8295R, 9320R, 8235R, 9260R, 9285R, 7260R, 7280R,
7210R, 7230R, 7250R, 7270R, 7290R, 9245R, 8270R, 8295R, 8130, 8230, 8430,
8530



SCHWARZE BULLE
KEEPS YOU RUNNING!

JOHN DEERE



SB Part No.
SB-1.3.4.9

Description
PLANETARY CARRIER -
HUB HOUSING

OEM No.
L40041,81454C1,
E1NN1N045AA,
83927791,
ZF4472351020

Applicable Model

John Deere

2155, 2350, 2355, 2355N, 2550, 2555, 2755, 2855N



SB Part No.
SB-1.3.4.10

Description
PLANETARY CARRIER -
ASSEMBLY

OEM No.
R120957ASSY, R64345,
R92335, R99359, R64324

Applicable Model

John Deere

4555, 4560, 4640, 4650, 4755, 4760, 8440, 8450, 8630



SB Part No.
SB-1.3.4.11

Description
PLANETARY CARRIER -
ASSEMBLY

OEM No.
R115413ASSY, R115413,
R124639, R125070

Applicable Model

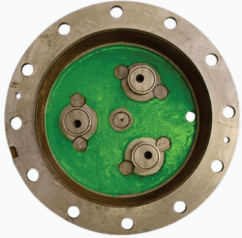
John Deere

8300, 8310, 8400, 8410, 8870, 8960, 8970, 9300, 9400



SCHWARZE BULLE
KEEPS YOU RUNNING!

JOHN DEERE



SB Part No.
SB-1.3.4.12

Description
PLANETARY CARRIER -
HUB HOUSING

OEM No.
R104755, R183792,
R168091, R296945

Applicable Model

John Deere

7210, 7410, 7510, 7710, 7810, 8100, 8110, 8200, 8210, 8300, 8310, 8400, 8410



SB Part No.
SB-1.3.4.13

Description
PLANETARY CARRIER -
ASSEMBLY

OEM No.
RE17691ASSY, RE17691,
RE17692, R112072, R71578,
R71581, R71582, Ar94152,
AR94153, RE51473

Applicable Model

John Deere

4555, 4560, 4650, 4755, 4760, 4850, 4955, 4960



SB Part No.
SB-1.3.4.14

Description
PLANETARY CARRIER -
HOUSING

OEM No.
Re17689

Applicable Model

John Deere

4450, 4455



SCHWARZE BULLE
KEEPS YOU RUNNING!

JOHN DEERE

SB Part No.
SB-1.3.4.15

Description
PLANETARY CARRIER -
ASSEMBLY

OEM No.
Ar53037



Applicable Model

John Deere
3020, 4020

SB Part No.
SB-1.3.4.16

Description
PLANETARY CARRIER -
HOUSING

OEM No.
R59756



Applicable Model

John Deere
4250, 4255, 4350, 4440

SB Part No.
SB-1.3.4.17

Description
PLANETARY CARRIER -
HOUSING

OEM No.
R59933



Applicable Model

John Deere
4020, 4050, 4055, 4230, 4250, 4255, 4430, 9600, 9610



SCHWARZE BULLE
KEEPS YOU RUNNING!

JOHN DEERE

SB Part No.
SB-1.3.4.18

Description
PLANETARY CARRIER -
ASSEMBLY

OEM No.
Ar67978, R50347



Applicable Model

John Deere
4030, 4230, 4430

SB Part No.
SB-1.3.4.19

Description
PLANETARY CARRIER -
HOUSING

OEM No.
Re17691



Applicable Model

John Deere
4650, 4850, 4555, 4755, 4955, 4560, 4760, 4960



SCHWARZE BULLE
KEEPS YOU RUNNING!

JOHN DEERE

SB Part No.
SB-1.3.4.20

Description
PLANETARY CARRIER -
ASSEMBLY

OEM No.
L59307ASSY, L60155



Applicable Model

John Deere
3055, 3155, 3255

SB Part No.
SB-1.3.4.21

Description
PLANETARY CARRIER -
ASSEMBLY

OEM No.
T21414ASSY, T21547



Applicable Model

John Deere
1020, 1520, 2020

SB Part No.
SB-1.3.4.22

Description
PLANETARY CARRIER -
ASSEMBLY

OEM No.
AI39253



Applicable Model

John Deere
3055, 3255, 3150, 3155



SCHWARZE BULLE
KEEPS YOU RUNNING!

JOHN DEERE

SB Part No.
SB-1.3.4.24

Description
PLANETARY CARRIER -
ASSEMBLY

OEM No.
R26003ASSY, R26003,
R26004, R26005, R26008



Applicable Model

John Deere
4010

SB Part No.
SB-1.3.4.25

Description
PLANETARY CARRIER -
ASSEMBLY

OEM No.
Re238232, AR105732,
AR77525, AR83262, AR82380



Applicable Model

John Deere
4030, 4040, 4050, 4055, 4230, 4240, 4250, 4255, 4430

SB Part No.
SB-1.3.4.26

Description
PLANETARY CARRIER -
HOUSING

OEM No.
Ar85312, R65910



Applicable Model

John Deere
4640, 4840, JD740, 743, 770, 770A, 772A



SCHWARZE BULLE
KEEPS YOU RUNNING!

JOHN DEERE



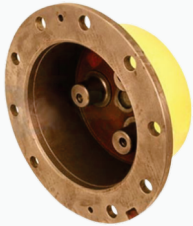
SB Part No.
SB-1.3.4.27

Description
PLANETARY CARRIER -
ASSEMBLY

OEM No.
R83647ASSY, R83647,
R121728, R120961

Applicable Model

John Deere
8960, 8870, 8970



SB Part No.
SB-1.3.4.28

Description
PLANETARY CARRIER -
HUB HOUSING

OEM No.
R201555, R169966,
R99681, R88215, R238229

Applicable Model

John Deere
4050, 4055, 4250, 4255, 4450, 4455, 7200, 7210, 7400, 7410, 7510, 7600, 7610,
7630, 7700, 7710, 7720, 7730, 7800, 7810, 7820



SB Part No.
SB-1.3.4.29

Description
PLANETARY CARRIER -
ASSEMBLY

OEM No.
AR95861ASSY, Ar95861,
R70842, R71481, R71536

Applicable Model

John Deere
4050, 4055, 4250, 4255, 4450, 4455, 4555, 4560, 4650, 4755, 4760, 4850, 4955, 4960



SCHWARZE BULLE
KEEPS YOU RUNNING!

JOHN DEERE



SB Part No.
SB-1.3.4.30

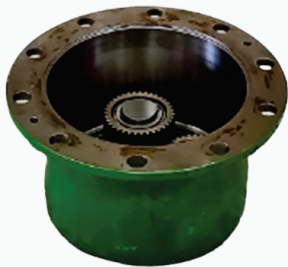
Description
PLANETARY CARRIER -
ASSEMBLY

OEM No.
L101359

Applicable Model

John Deere

5050E, 5055E, 5083E, 5403, 5425, 5615, 5715, 5725



SB Part No.
SB-1.3.4.31

Description
PLANETARY CARRIER -
HUB ASSEMBLY

OEM No.
L204864

Applicable Model

John Deere

6170M, 6170R, 6175R



SCHWARZE BULLE
KEEPS YOU RUNNING!

JOHN DEERE

SB Part No.	Description	OEM No.
SB-1.3.4.32	PLANETARY CARRIER - HUB ASSEMBLY	L166299



Applicable Model

John Deere

AVJ55, AVJ60, AVJ70, JX55, JX60, JX65, JX70, JX75, JX80, JX85, JX90, JX95, VJ60, VJ70, VJ80, Fiat: 45-66, 466, 50-66, 55-46, 55-56, 55-66, 55-76, 55-86, 566, 60-46, 60-56, 60-66, 60-76, 62-86, 65-46, 65-56, 65-66, 666, 70-56, 70-66, 70-76, 72-86, 766, 80-66, 80-76, 82-86, 82-86, 3010S, 3435, 3830, 3935, 4010S, 4030, 4135, 4230, 4430, 5010S, TD4.100F, TD4.70F, TD4.80F, TD4.90F, TD4020, TD4020F, TD4030, TD4030F, TD4040, TD4040F, TD5.100, TD5.105, TD5.115, TD5.65, TD5.75, TD5.85, TD5.90, TD5.95, TD5010, TD5020, TD5030



SCHWARZE BULLE
KEEPS YOU RUNNING!

JOHN DEERE



SB Part No.
SB-1.3.4.33

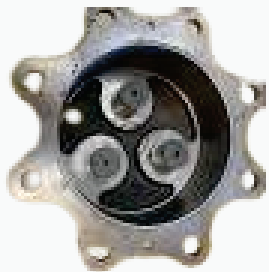
Description
PLANETARY CARRIER -
HUB HOUSING

OEM No.
AR95861ASSY, Ar95861,
R70842, R71481, R71536

Applicable Model

John Deere

4050, 4055, 4250, 4255, 4450, 4455, 4555, 4560, 4650, 4755, 4760, 4850,
4955, 4960



SB Part No.
SB-1.3.4.34

Description
PLANETARY CARRIER -
HUB HOUSING

OEM No.
RE212839

Applicable Model

John Deere

5E-5303, 5E-5310, 5E-540, 5045E, 5060E, 5065E, 5070E, 5075E, 5080E,
5080R, 5082E, 5090E, 5090EH, 5090R, 5100R, 5103, 5105, 5203, 5203S,
5205, 52205225, 5303, 5320, 5325, 5403, 5415, 5420, 5425, 5503, 5520
, 5525, 5603, 5610, 5615, 5620, 5625, 5715, 5720, 5725, 5820



SCHWARZE BULLE
KEEPS YOU RUNNING!

JOHN DEERE



SB Part No.
SB-1.3.4.35

Description
PLANETARY CARRIER -
HUB HOUSING

OEM No.
L101726

Applicable Model

John Deere

3215,3220,3420,6506,6510,6520,6600,6605,6610,6620,6800,6810,6820,6900,6910,
6920,7210,7220,7320,7405,7410,7500,6910S,6920S



SB Part No.
SB-1.3.4.36

Description
PLANETARY CARRIER -
HUB HOUSING

OEM No.
L116105, ZF4475317049,
ZF4475317122

Applicable Model

John Deere

6140J, 6155J, 6810, 6820, 6910, 6910S, 6920, 6920S, 7210, 7410, 7420, 7425, 7500
7505, 7510, 7515, 7520, 7525



SCHWARZE BULLE
KEEPS YOU RUNNING!

JOHN DEERE



SB Part No.
SB-1.3.4.37

Description
PLANETARY CARRIER -
HUB ASSEMBLY

OEM No.
L101726KIT,
F716300020420KIT,
ZF4475306068KIT

Applicable Model

John Deere
8960, 8870, 8970

SB Part No.
SB-1.3.4.38

Description
PLANETARY CARRIER -
HUB HOUSING

OEM No.
Re45942, 81879351,
CAR65774



Applicable Model

John Deere
5200, 5210, 5220, 5300, 5310, 5320, 5400, 5410, 5415, 5420, 5500, 5510,
5520, 5600, 5615, 5700, 5715



SCHWARZE BULLE
KEEPS YOU RUNNING!

JOHN DEERE



SB Part No.
SB-1.3.4.39

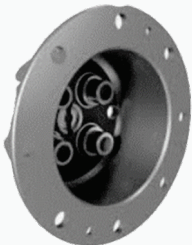
Description
PLANETARY CARRIER -
HUB HOUSING

OEM No.
L100168, 04415070,
F308300021140, Zf4475404050

Applicable Model

John Deere

210C, 210LE, 300D, 310D, 310E, 310G, 310SE, 310SG, 315D, 315SE, 315SG, 482C, 485E, 486E, 488E, 3200, 3215, 3220, 3400, 3420, 6010, 6020, 6100, 6110, 6110L, 6120, 6120L, 6200, 6200L, 6205, 6210, 6210L, 6215, 6220, 6220L, 6300, 6300L, 6310, 6310L, 6320, 6320L, 6400, 6400L, 6405, 6410, 6410L, 6415, 6420, 6420L, 6500L, 6505, 6510L, 6515, 6520, 6520L, 6620



SB Part No.
SB-1.3.4.39

Description
PLANETARY CARRIER -
HUB HOUSING

OEM No.
L116105, ZF4475317049,
ZF4475317122

Applicable Model

John Deere

3040, 3050, 3055, 3140, 3150, 3155, 3255, 3350, 3640, 3650, 6300, 6403, 6405, 6415, 6500, 6600, 6603, 6605



SCHWARZE BULLE
KEEPS YOU RUNNING!

JOHN DEERE



SB Part No.
SB-1.3.4.40

Description
PLANETARY CARRIER -
HUB HOUSING

OEM No.
L110737, A52143,
83944714,
87771843,
ZF4475317019

Applicable Model

John Deere
8960, 8870, 8970



SB Part No.
SB-1.3.4.41

Description
PLANETARY CARRIER -
HUB HOUSING

OEM No.
L40012, 81687C1,
E2NN1N045AA, 83934017,
04349976, F198300020620
, 5213493, Zf4472353077

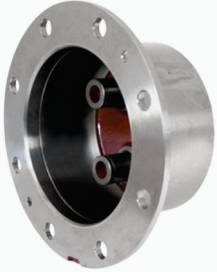
Applicable Model

John Deere
2140, 2750, 2950, 2955, 3040, 3050, 3055, 3140, 3255, 3350, 5403, 5600, 5605, 5700,
5705 , 8960, 8870, 8970



SCHWARZE BULLE
KEEPS YOU RUNNING!

JOHN DEERE



SB Part No.
SB-1.3.4.42

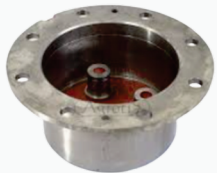
Description
PLANETARY CARRIER -
HUB HOUSING

OEM No.
L100242,
F510300020570,
ZF4475305113

Applicable Model

John Deere

310G, 310SG, 315SG, 410D, 410G, 510D, 3215, 3220, 3420, 3800, 6010, 6020,
6110, 6110L, 6120, 6120L, 6200, 6200L, 6210, 6210L, 6220, 6220L, 6300, 6300L,
6310, 6310L, 6320, 6400, 6400L, 6403, 6405, 6410, 6410L, 6420, 6420S, 6500L,
6510L, 6510S, 6520, 6603, 6620



SB Part No.
SB-1.3.4.43

Description
PLANETARY CARRIER -
HUB HOUSING

OEM No.
L112761, 04417262,
F514300020380,
ZF4475306061

Applicable Model

John Deere

3200, 3215, 3220, 3400, 3420, 3800, 6205, 6215, 6320, 6420, 6505, 6506, 6510, 6510S,
6515, 6520, 6600, 6605, 6610, 6615, 6620, 6715, 7220, 7320



SCHWARZE BULLE
KEEPS YOU RUNNING!

JOHN DEERE



SB Part No.
SB-1.3.4.44

Description
PLANETARY CARRIER -
HUB HOUSING

OEM No.
L101726,
F716300020420,
ZF4475306068

Applicable Model

John Deere

3215, 3220, 3420, 6506, 6510, 6520, 6600, 6605, 6610, 6620, 6800, 6810, 6820, 6900,
6910, 6910S, 6920, 6920S, 7210, 7220, 7320, 7405, 7410, 7500, 7510



SCHWARZE BULLE
KEEPS YOU RUNNING!

MTZ-BELARUS



SB Part No.
SB-1.4.4.1

Description
PLANETARY CARRIER -
HOUSING

OEM No.
15212308056

Applicable Model

Fits Models: MT3 892, 1025,1221,1523, 1521 , 1222



SB Part No.
SB-1.4.4.2

Description
PLANETARY CARRIER -
ASSEMBLY

OEM No.
1021742021

Applicable Model

Fits Models: MT3-80.1 ; 44 · 45 · 46



SB Part No.
SB-1.4.4.3

Description
PLANETARY CARRIER -
ASSEMBLY

OEM No.
854202065

Applicable Model

Fits Models: MT3-1221 BOM



SB Part No.
SB-1.4.4.4

Description
PLANETARY CARRIER -
HOUSING

OEM No.
12212407536-5

Applicable Model

Fits Models: MT3-1221 2009 , MT3-1221 2010 , 1523.4 , 1523.5



SCHWARZE BULLE
KEEPS YOU RUNNING!

Repairing KITS



SB KIT No.
SB-1.2.14.1

Description
KIT-Full

For Planetary Carrier:

4986426,
Tx10507,
4017016,
4017117,
4017156,
4017158,
4017016,
4017117.

BOM :

PIN/SHAFT 567575	3
ROLLER PINS 28044400	162
WASHERS	9
SCREWS	3
LOCK PLATE	1
PINION GEARS 579295, 87569314	3
RING GEAR	1

Applicable Model:

Allis Chalmers

5045, 5050, 6060

Case IH

AVJ Series: AVJ55, AVJ60, AVJ70

Fiat

46 Series: 55-46, 60-46, 65-46

56 Series: 55-56, 60-56, 65-56, 70-56

Ford New Holland

3010S, 4010S, 5010S, TT65D

Long Tractor

2310, 2360, 2360DTC, 2510, 2510DTC, 2510SD, 2510SD-DTC, 260C, 2610, 2610DTC, 2610SD, 2610SD-DTC, 310, 310C, 310DT, 350, 360, 360C, 445, 445DT, 445SD, 445V, 460, 460DT, 460SD, 460V, 510, 510DT, 550, 550DT, 560, 560DT, 560DTC, 610, 610DT, 610DTE

White Oliver

1250, 1250A, 1255, 1265, 1270, 1355, 1365, 1370, 2-50, 2-60



SCHWARZE BULLE
KEEPS YOU RUNNING!

Repairing KITS



SB KIT No.
SB-1.2.14.2

Description
KIT-Full

For Planetary Carrier:

4986426,
Tx10507,
4017016,
4017117,
4017156,
4017158,
4017016,
4017117.

BOM :

PIN/SHAFT 567575	3
ROLLER PINS 28044400	162
WASHERS	9
SCREWS	3
LOCK PLATE	1
RING GEAR	1

Applicable Model:

Allis Chalmers

5045, 5050, 6060

Case IH

AVJ Series: AVJ55, AVJ60, AVJ70

Fiat

46 Series: 55-46, 60-46, 65-46

56 Series: 55-56, 60-56, 65-56, 70-56

Ford New Holland

3010S, 4010S, 5010S, TT65D

Long Tractor

2310, 2360, 2360DTC, 2510, 2510DTC, 2510SD, 2510SD-DTC, 260C, 2610, 2610DTC, 2610SD, 2610SD-DTC, 310, 310C, 310DT, 350, 360, 360C, 445, 445DT, 445SD, 445V, 460, 460DT, 460SD, 460V, 510, 510DT, 550, 550DT, 560, 560DT, 560DTC, 610, 610DT, 610DTE

White Oliver

1250, 1250A, 1255, 1265, 1270, 1355, 1365, 1370, 2-50, 2-60



SCHWARZE BULLE
KEEPS YOU RUNNING!

Repairing KITS



SB KIT No.
SB-1.2.14.3

Description
KIT-Pinion Gears Only

BOM :

PINION GEARS 579295,87569314	3
---------------------------------	---

For Planetary Carrier:
4986426,
Tx10507,
4017016,
4017117,
4017156,
4017158,
4017016,
4017117.

Applicable Model:

Allis Chalmers
5045, 5050, 6060

Case IH
AVJ Series: AVJ55, AVJ60, AVJ70

Fiat
46 Series: 55-46, 60-46, 65-46
56 Series: 55-56, 60-56, 65-56, 70-56

Ford New Holland
3010S, 4010S, 5010S, TT65D

Long Tractor
2310, 2360, 2360DTC, 2510, 2510DTC, 2510SD, 2510SD-DTC, 260C, 2610, 2610DTC, 2610SD, 2610SD-DTC, 310, 310C, 310DT, 350, 360, 360C, 445, 445DT, 445SD, 445V, 460, 460DT, 460SD, 460V, 510, 510DT, 550, 550DT, 560, 560DT, 560DTC, 610, 610DT, 610DTE

White Oliver
1250, 1250A, 1255, 1265, 1270, 1355, 1365, 1370, 2-50, 2-60



SCHWARZE BULLE
KEEPS YOU RUNNING!

Repairing KITS

SB Part No.
1.1.12.1

Description
KIT-Full

BOM :



For Planetary Carrier:
1866558M92,
1866558M93,
1870538M92,
1870538M93,
1866558M93.

PIN/SHAFT 1866538M2	3
ROLLER PINS 1866553M2	96
WASHERS EYE 1866542M1	6
WASHERS ROUND 1866543M1	3
RETAINER RING	1
PINION GEARS 1866552M1	3

Applicable Model:

Massey Ferguson

Articulated Series: 1200, 1250

100 Series: 148, 152, 165, 168, 185, 188

200 Series: 235, 245, 250, 260, 265, 275, 283, 283 Brazilian, 285, 290, 298

300 Series: 362, 365, 375, 375E Brazilian, 390, 390E Brazilian, 390T, 396, 398, 399

300 Italian Series: 383, 393

500 Series: 550, 565, 575, 590, 592, 595

600 Series: 675, 690, 698, 698T, 699

4000 Series: 4215, 4220, 4225, 4235, 4245, 4255, 4260, 4265, 4270, 4315, 4325, 4335, 4345, 4355, 4360, 4365, 4370

Brazilian: 440

Industrial: 30B, 30D, 30E, 40B, 50, 50A, 50B, 50C, 50D, 50E, 50F, 60

Landini

30 Series: 5830, 6030



SCHWARZE BULLE
KEEPS YOU RUNNING!

Repairing KITS

Repairing KITS



SB KIT No.
1.1.12.2

Description
KIT-W/O Pinion Gears

For Planetary Carrier:
1866558M92,
1866558M93,
1870538M92,
1870538M93.

BOM :

PINION GEARS 1866552M1	3
---------------------------	---

Applicable Model:

Massey Ferguson

Articulated Series: 1200, 1250

100 Series: 148, 152, 165, 168, 185, 188

200 Series: 235, 245, 250, 260, 265, 275, 283, 283 Brazilian, 285, 290, 298

300 Series: 362, 365, 375, 375E Brazilian, 390, 390E Brazilian, 390T, 396, 398, 399

300 Italian Series: 383, 393

500 Series: 550, 565, 575, 590, 592, 595

600 Series: 675, 690, 698, 698T, 699

4000 Series: 4215, 4220, 4225, 4235, 4245, 4255, 4260, 4265, 4270, 4315, 4325, 4335, 4345, 4355, 4360, 4365, 4370

Brazilian: 440

Industrial: 30B, 30D, 30E, 40B, 50, 50A, 50B, 50C, 50D, 50E, 50F, 60

Landini

30 Series: 5830, 6030



SCHWARZE BULLE
KEEPS YOU RUNNING!

Repairing KITS



SB KIT No.
1.1.12.3

Description
KIT-W/O Pinion Gears

For Planetary Carrier:
1866558M92,
1866558M93,
1870538M92,
1870538M93.

BOM :

PINION GEARS 1866552M1	3
---------------------------	---

Applicable Model:

Massey Ferguson

Articulated Series: 1200, 1250

100 Series: 148, 152, 165, 168, 185, 188

200 Series: 235, 245, 250, 260, 265, 275, 283, 283 Brazilian, 285, 290, 298

300 Series: 362, 365, 375, 375E Brazilian, 390, 390E Brazilian, 390T, 396, 398, 399

300 Italian Series: 383, 393

500 Series: 550, 565, 575, 590, 592, 595

600 Series: 675, 690, 698, 698T, 699

4000 Series: 4215, 4220, 4225, 4235, 4245, 4255, 4260, 4265, 4270, 4315, 4325, 4335, 4345, 4355, 4360, 4365, 4370

Brazilian: 440

Industrial: 30B, 30D, 30E, 40B, 50, 50A, 50B, 50C, 50D, 50E, 50F, 60

Landini

30 Series: 5830, 6030



SCHWARZE BULLE
KEEPS YOU RUNNING!

Repairing KITS



SB KIT No.
1.1.11.1

Description
KIT-Full

For Planetary Carrier:

897016M92,
897711M92,
897711M93,
887711M3,
897711M91

BOM :

PIN/SHAFT 897019M1	3
ROLLER PINS 897025M1	162
WASHERS BIG 184750M2	6
WASHERS SMALL 897020M1	9
RETAINER RING	1
PINION GEARS 897018M1	3
RING GEAR	1

Applicable Model:

Massey Ferguson

Pre-100 Series: 35, 35 (Gas/Petrol), 35X, 65, 765

100 Series: 133, 135, 135 Gas/Petrol, 135 US Built, 140, 145, 148, 150, 152, 155, 158, 165, 165 US Built, 175, 175 US Built

200 Series: 230, 230 US Built, 231, 235, 240, 243, 245, 250, 253, 255, 260, 262, 263, 265, 265S, 275, 285S, 290

300 Series: 340, 342, 350, 352, 355, 360, 362, 365, 375,

Brazilian: 375E, 390E, 415, 425, 435

500 Series: 550, 560

Landini

30 Series: 58306030



SCHWARZE BULLE
KEEPS YOU RUNNING!

Repairing KITS



SB KIT No.
1.1.12.2

Description
KIT-W/O Pinion Gears

For Planetary Carrier:
897016M92,
897711M92,
897711M93,

BOM :

PIN/SHAFT 897019M1	3
ROLLER PINS 897025M1	162
WASHERS BIG 184750M2	6
WASHERS SMALL 897020M1	9
RETAINER RING	1

Applicable Model:

Massey Ferguson

Pre-100 Series: 35, 35 (Gas/Petrol), 35X, 65, 765

100 Series: 133, 135, 135 Gas/Petrol, 135 US Built, 140, 145, 148, 150, 152, 155, 158, 165, 165 US Built, 175, 175 US Built

200 Series: 230, 230 US Built, 231, 235, 240, 243, 245, 250, 253, 255, 260, 262, 263, 265, 265S, 275, 285S, 290

300 Series: 340, 342, 350, 352, 355, 360, 362, 365, 375,

Brazilian: 375E, 390E, 415, 425, 435

500 Series: 550, 560

Landini

30 Series: 58306030



SCHWARZE BULLE
KEEPS YOU RUNNING!

Repairing KITS



SB KIT No.
1.1.11.3

Description

KIT-Pinion Gears Only

For Planetary Carrier:

897016M92,
897711M92,
897711M93,
897711M91.

BOM :

PINION GEARS 1866552M1	3
---------------------------	---

Applicable Model:

Massey Ferguson

Pre-100 Series: 35, 35 (Gas/Petrol), 35X, 65, 765

100 Series: 133, 135, 135 Gas/Petrol, 135 US Built, 140, 145, 148, 150, 152, 155, 158, 165, 165 US Built, 175, 175 US Built

200 Series: 230, 230 US Built, 231, 235, 240, 243, 245, 250, 253, 255, 260, 262, 263, 265, 265S, 275, 285S, 290

300 Series: 340, 342, 350, 352, 355, 360, 362, 365, 375,

Brazilian: 375E, 390E, 415, 425, 435

500 Series: 550, 560

Landini

30 Series: 58306030



SCHWARZE BULLE
KEEPS YOU RUNNING!

Repairing KITS



SB KIT No.
1.1.13.1

Description

KIT-Full

For Planetary Carrier:
1864872M1,
1864872M3,
3612128M1,
361212M1.

BOM :

PIN/SHAFT	3
ROLLER PINS	96
WASHERS BIG EYE	2
WASHERS SMALL EYE	4
WASHER ROUND	3
PINION GEARS	3
SPIROL PINS	3

Applicable Model:

Massey Ferguson

100 Series: 135, 135 US Built, 158, 165, 165 US Built, 168, 175, 175 US Built, 178, 180, 185, 188

200 Series: 235, 240, 245, 250, 253, 255, 261, 265, 270, 275, 282, 282 US Built, 283, 285, 290 US Built

300 Series: 350, 352, 355, 360, 362, 365, 372, 375, 375E (Brazilian), 382, 383 (Italian), 390, 390T, 393 (Italian), 396

500 Series: 565, 575, 590

600 Series: 670, 675, 690

Industrial Tractors: 20E, 20F, 30, 30B, 30D, 30E, 30H, 31, 40, 40B, 40D, 40E, 50, 50A, 50C, 50D, 50E, 50EX

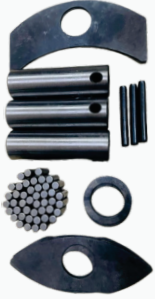
Landini

30 Series: 5830



SCHWARZE BULLE
KEEPS YOU RUNNING!

Repairing KITS



SB KIT No.
SB-1.1.13.2

Description
KIT-W/O Pinion Gears

For Planetary Carrier:
1864872M1,
1864872M3,
3612128M1,
361212M1.

BOM :

PIN/SHAFT	3
ROLLER PINS	96
WASHERS BIG EYE	2
WASHERS SMALL EYE	4
WASHER ROUND	
SPIROL PINS	3

Applicable Model:

Massey Ferguson

100 Series: 135, 135 US Built, 158, 165, 165 US Built, 168, 175, 175 US Built, 178, 180, 185, 188

200 Series: 235, 240, 245, 250, 253, 255, 261, 265, 270, 275, 282, 282 US Built, 283, 285, 290 US Built

300 Series: 350, 352, 355, 360, 362, 365, 372, 375, 375E (Brazilian), 382, 383 (Italian), 390, 390T, 393 (Italian), 396

500 Series: 565, 575, 590

600 Series: 670, 675, 690

Industrial Tractors: 20E, 20F, 30, 30B, 30D, 30E, 30H, 31, 40, 40B, 40D, 40E, 50, 50A, 50C, 50D, 50E, 50EX

Landini

30 Series: 5830



SCHWARZE BULLE
KEEPS YOU RUNNING!

Repairing KITS



SB KIT No.
SB-1.1.13.3

Description
KIT-Pinion Gears Only

For Planetary Carrier:
1864872M1,
1864872M3,
3612128M1,
361212M1.

BOM :

PINION GEARS 1866552M1	3
---------------------------	---

Applicable Model:

Massey Ferguson

100 Series: 135, 135 US Built, 158, 165, 165 US Built, 168, 175, 175 US Built, 178, 180, 185, 188

200 Series: 235, 240, 245, 250, 253, 255, 261, 265, 270, 275, 282, 282 US Built, 283, 285, 290 US Built

300 Series: 350, 352, 355, 360, 362, 365, 372, 375, 375E (Brazilian), 382, 383 (Italian), 390, 390T, 393 (Italian), 396

500 Series: 565, 575, 590

600 Series: 670, 675, 690

Industrial Tractors: 20E, 20F, 30, 30B, 30D, 30E, 30H, 31, 40, 40B, 40D, 40E, 50, 50A, 50C, 50D, 50E, 50EX

Landini

30 Series: 5830



SCHWARZE BULLE
KEEPS YOU RUNNING!

Repairing KITS



SB KIT No.
SB- 1.1.13.2

Description
KIT-FULL-BRAKE 9"

For MF240-260:
1860963M91,
1860963M92,
3538836M91,
41102.

BOM :

LEVER LINK	2
SPRING 3 TURN	4
STEEL BALL	6
BOLTS	2
NUTS	2

Applicable Model:

Massey Ferguson

100 Series: 113, 135, 145, 148, 152, 158, 165, 168, 180, 188

200 Series: 240, 245, 250, 255, 260, 261, 263, 270, 275, 282, 283, 285, 290, 292, 296, 297

300 Series: 350, 352, 355, 360, 362, 375, 383 (Italian Series), 390, 390E, 396, 399

500 Series : 550, 565, 575, 590, 595

600 Series: 650 (Brazilian), 670, 675, 690, 698, 699

Industrial Tractors: 20E, 20F, 30, 30B, 30D, 30E, 31, 40, 40B, 40E, 50, 50A, 50C, 50D, 50E

Brazilian Series: 415, 425, 435, 445, 460, 465, 475

Articulated Series: 1200, 1250

Ford New Holland

1000 Series: 5000, 5000 US Built, 5100, 5200, 5600, 5700, 5900

10 Series: 5110, 5610, 6410, 6610, 6710, 6810, 7610, 7710, 7810, 7310, 8210

40 Series: 5340

Backhoe Models: 6500, 7500, 755, 7554, 7558

1000 Series Large: 10000, 13000, 14500

TS Series: TS100, TS110, TS120, Ts90

Other Models: 650 (1954-1957), 660 (1954-1957), 750, 7554, 7558, 765, 7300, 7400

Valmet & Valbra

05 Series: 505, 605, 705, 805

Mezzo Series: 6000, 6100, 6800

55 Series: 655, 6600

Mega Series: 8000, 8100, 8200, 8400

David Brown

1400 Series: 1810, 1412

94 Series: 1994

1690 Series: 1690, 1690 Turbo, 1694

90 Series: 1690, 1694



SCHWARZE BULLE
KEEPS YOU RUNNING!

Repairing KITS



SB KIT No.
1.1.34.1

Description
KIT-FULL-BRAKE

For MF375-385:
3596776M91 (LH)

BOM :

LEVER LINK	1
SPRING 3 TURN	4
SPRING 19 TURN	1
STEEL BALL	6
BOLTS	1
NUTS	1

Applicable Model:

Massey Ferguson

300 Series: 350, 352, 355, 360, 562, 365, 372, 375, 382, 390, 3901, 396, 398, 399

4000: 4215, 4220, 4225, 4235, 4240, 4245, 4255, 4260, 4265, 4270, 4315, 4320, 4325, 4335, 4360, 4365, 4370,

Brazilian Series: 5340, 5355, 5360, 5365



SB KIT No.
1.1.35.1

Description
KIT-FULL-BRAKE

For MF375-385:
3596778M91 (RH)

BOM :

LEVER LINK	1
SPRING 3 TURN	4
SPRING 19 TURN	1
STEEL BALL	6
BOLTS	1
NUTS	1

Applicable Model:

Massey Ferguson

300 Series: 350, 352, 355, 360, 562, 365, 372, 375, 382, 390, 3901, 396, 398, 399

4000: 4215, 4220, 4225, 4235, 4240, 4245, 4255, 4260, 4265, 4270, 4315, 4320, 4325, 4335, 4360, 4365, 4370,

Brazilian Series: 5340, 5355, 5360, 5365



SCHWARZE BULLE
KEEPS YOU RUNNING!

Repairing KITS

SB KIT No.
1.1.36.1

Description
KIT-FULL-CLUTCH

BOM :



For MF240-260:
230001542,
230001542,
1867438M91,
1867438M92,
3599463M91,
3599463M92.

LEVERS CLUTCH	3
PRESSURE SPRING	9
LEVER SPRING	3
PIN SMALL	3
PIN MEDIUM	3
PIN LARGE	3
LOCK PINS	6
B-LINK	3
BOLT 5/16	3
NUT 5/16	3
BOLT 3/8	3
NUT 3/8	3
HAIR PIN SPRING	3
WASHERS	9

Applicable Model:

Massey Ferguson

100 Series: 135, 148, 152, 155, 158
200 Series: 230, 231, 235, 240, 245, 250, 255, 261
300 Series: 340, 342, 350
500 Series: 550
Industrial Series: 20, 20B, 20D, 20F
Industrial Tractors (E Series): 30E, 40E

SB KIT No.
1.1.37.5

Description
KIT-FULL-CLUTCH

BOM :



For MF375-385:
3697162M91,
3700527M1.

LEVERS CLUTCH	3
PRESSURE SPRING	12
LEVER SPRING	3
PIN SMALL	3
PIN MEDIUM	3
PIN LARGE	3
LOCK PINS	6
B-LINK	3
BOLT 5/16	3
NUT 5/16	3
BOLT 3/8	3
NUT 3/8	3
HAIR PIN SPRING	3
WASHERS	12

Applicable Model:

Massey Ferguson

200 Series: 271, 281
300 Series: 362, 362 N, 365, 372 N, 375, 382, 385, 390, 383, 390, 393, 396, 398, 399
4000 Series: 4220, 4225, 4235, 4240, 4243, 4245, 4253, 4255, 4260, 4263, 4265, 4270, 4320, 4325, 4335



SCHWARZE BULLE
KEEPS YOU RUNNING!

Repairing KITS



SB KIT No.
1.2.6.4

Description
KIT-FULL-CLUTCH

For FIAT480-640:
5106951,
5116050,
5121198,
5121603,
5121798,
5145712,
5016042,
628105309.

BOM :

LEVERS CLUTCH SMALL	3
LEVERS CLUTCH LARGE	3
EYE BOLTS LARGE	3
EYE BOLTS SMALL	3
PIN SMALL	6
PIN LARGE	6
SPRING LEVER SMALL	3
SPRING LEVER LARGE	3

Applicable Model:

Fiat

Classic Models: 446, 466, 480, 500, 540, 550, 566, 570, 580, 600, 640, 666, 670, 680, 766, 780

46 Series: 55-46, 65-46

66 Series: 55-66, 60-66, 65-66, 70-66, 80-66

76 Series: 70-76

90 Series: 55-90, 60-90, 65-90, 70-90, 80-90, 85-90

93 Series: 65-93, 72-93

94 Series: 65-94, 72-94

Allis Chalmers

5040, 5045, 5050, 6060, 6070

Universal

Models: 320, 353, 445, 453, 500, 530, 533, 550, 640, 643, 683, 703

White Oliver

Models: 1355, 1365, 1370, 2-50, 2-60, 700



SCHWARZE BULLE
KEEPS YOU RUNNING!

Repairing KITS



SB KIT No.
1.2.4.1

Description
KIT-FULL-BRAKE

For FIAT480-640:
5123164 (LH),
5129497 (RH).

BOM :

LEVER LINK	2
SPRING 3 TURN	3
STEEL BALL	5
BOLTS	2
NUTS	2

Applicable Model:

FIAT / NEW HOLLAND
640 / 640S